



2021 Fact Book Student Outcomes

Prepared by the SBCCD Office of Research,
Planning and Institutional Effectiveness

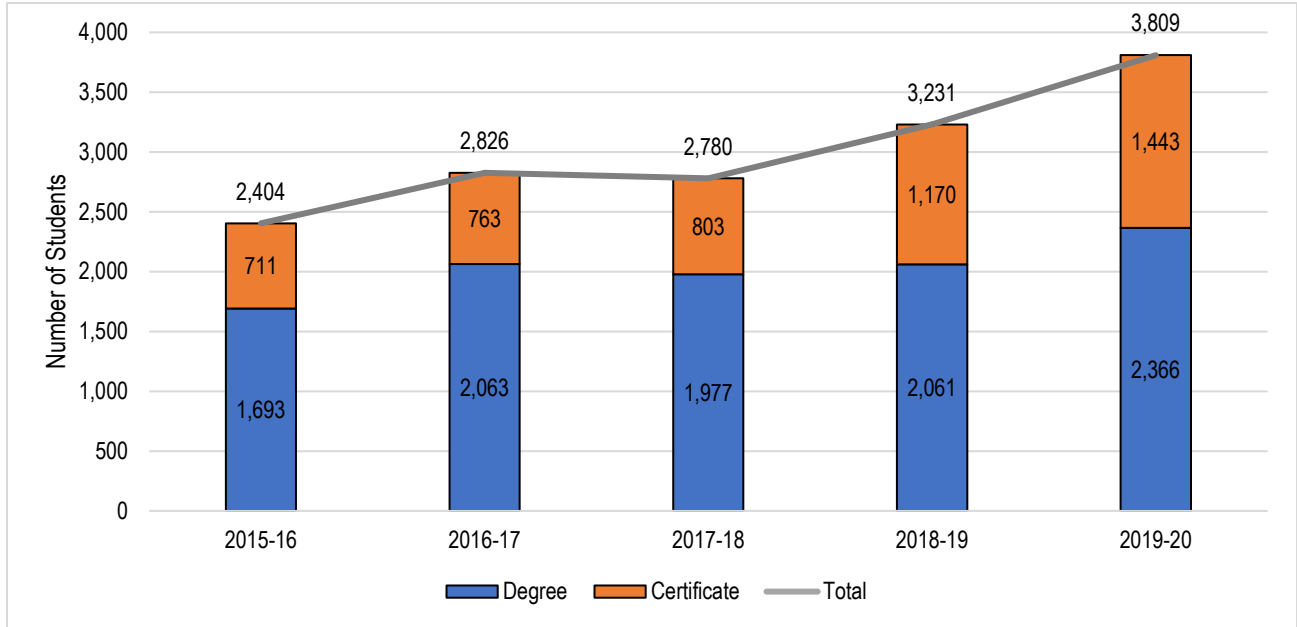
Table of Contents

Awards and Certificates: SBCCD	3
Awards and Certificates: Crafton Hills College	4
Awards and Certificates: San Bernardino Valley College	5
Awards and Certificates By Program, 2019-20: SBCCD	6
Awards and Certificates By Program, 2019-20: Crafton Hills College	7
Awards and Certificates By Program, 2019-20: San Bernardino Valley College	8
Annual Transfer Volume*, 2015-2016 through 2019-2020	9
Transfer Volume (CSU, UC, In-State, and Out-of-State): SBCCD	10
Transfer Volume (CSU, UC, In-State, and Out-of-State): Crafton Hills College.....	11
Transfer Volume (CSU, UC, In-State, and Out-of-State): San Bernardino Valley College.....	12
Top Ten Transfers to a Four-Year University: 2019-20	13
Course Success Rates	14
Course Success Rates by Gender: SBCCD	15
Course Success Rates by Gender: Crafton Hills College	16
Course Success Rates by Gender: San Bernardino Valley College	17
Course Success Rates by Race/Ethnicity: SBCCD	18
Course Success Rates by Race/Ethnicity: Crafton Hills College	19
Course Success Rates by Race/Ethnicity: San Bernardino Valley College	20
Course Success Rates by Age: SBCCD.....	21
Course Success Rates by Age: Crafton Hills College.....	22
Course Success Rates by Age: San Bernardino Valley College.....	23
Course Success Rates by Special Population: SBCCD	24
Course Success Rates by Special Population: Crafton Hills College	25
Course Success Rates by Special Population: San Bernardino Valley College	26
Course Retention Rates	27
Course Retention Rates by Gender: SBCCD	28
Course Retention Rates by Gender: Crafton Hills College	29
Course Retention Rates by Gender: San Bernardino Valley College	30
Course Retention Rates by Race/Ethnicity: SBCCD	31
Course Retention Rates by Race/Ethnicity: Crafton Hills College	32
Course Retention Rates by Race/Ethnicity: San Bernardino Valley College	33
Course Retention Rates by Age: SBCCD.....	34
Course Retention Rates by Age: Crafton Hills College.....	35

2021 Fact Book – Student Outcomes

Course Retention Rates by Age: San Bernardino Valley College.....	36
Course Retention Rates by Special Population: SBCCD.....	37
Course Retention Rates by Special Population: Crafton Hills College.....	38
Course Retention Rates by Special Population: San Bernardino Valley College.....	39
Persistence Rate: Retained from Fall to Spring.....	40
Licensure and Certification Pass Rates.....	41

Awards and Certificates: SBCCD

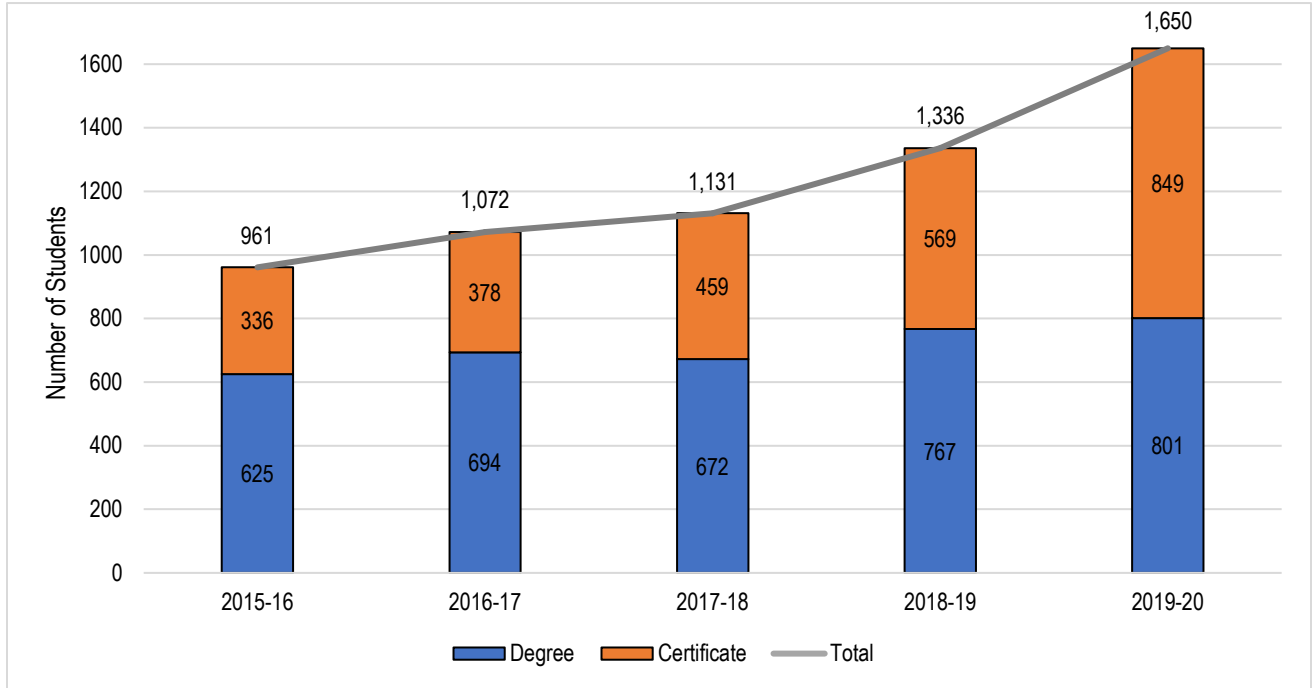


Total Headcount	2015-16	2016-17	2017-18	2018-19	2019-20	5 Year Change	5 Year Average
Degree	1,693	2,063	1,977	2,061	2,366	+40%	2,032
AA-T/AS-T	379	527	611	654	804	+112%	595
AA/AS Degree	1,314	1,536	1,366	1,407	1,562	+19%	1,437
Certificate	711	763	803	1,170	1,443	+103%	978
Certificate 60 or more units	10	19	11	14	12	+20%	13
Certificate 30 to 59 units	393	431	458	767	944	+140%	599
Certificate 29 or fewer units	308	313	334	388	487	+58%	366
Noncredit Award				1			
Total	2,404	2,826	2,780	3,231	3,809	+58%	3,010

Source: CCCC Data Mart: https://datamart.cccc.edu/Outcomes/Program_Awards.aspx

On average, between 2015-16 and 2019-20, 67.5% of total awards conferred were associate degrees and 32.5% were certificates. The number of associate degrees conferred in the last five academic years has increased 40%, from 1,693 in 2015-16 to 2,366 in 2019-20, and the number of certificates conferred has increased 103%, from 711 in 2015-16 to 1,443 in 2019-20.

Awards and Certificates: Crafton Hills College

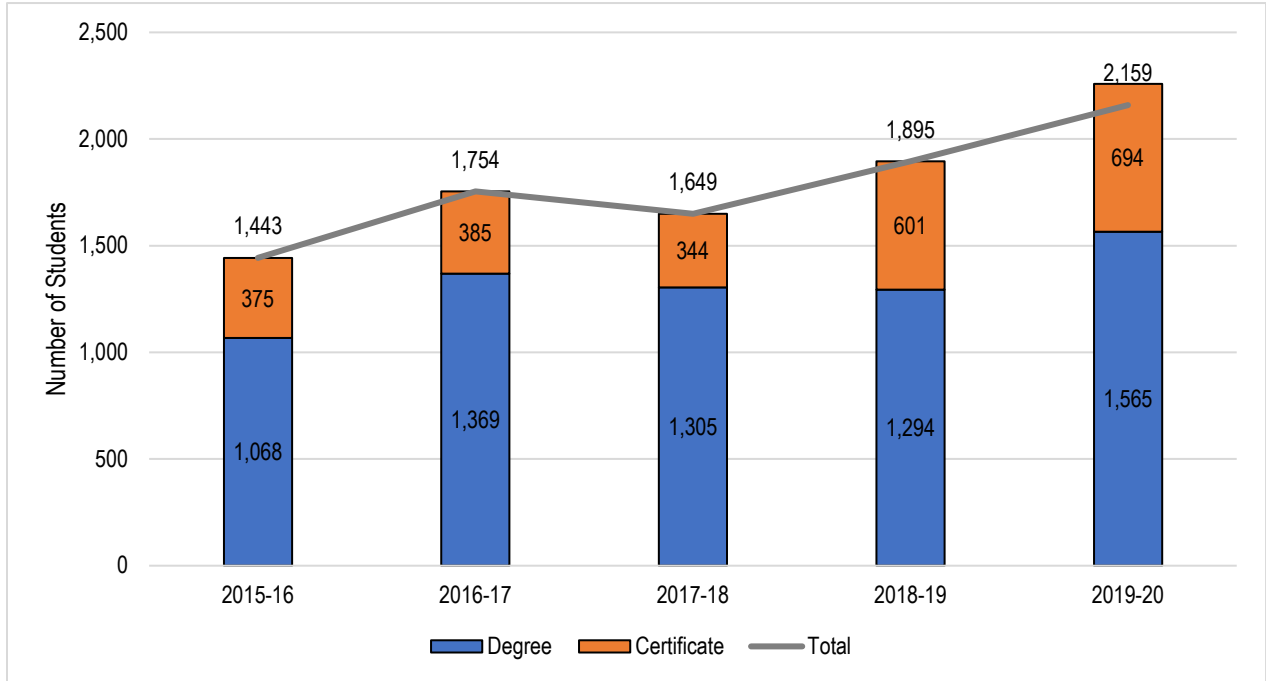


Total Headcount	2015-16	2016-17	2017-18	2018-19	2019-20	5 Year Change	5 Year Average
Degree	625	694	672	767	801	+28%	712
AA-T/AS-T	181	218	245	295	326	+80%	253
AA/AS Degree	444	476	427	472	475	+7%	459
Certificate	336	378	459	569	849	+153%	518
Certificate 60 or more units	5	8	8	8	7	+40%	7
Certificate 30 to 59 units	162	214	235	281	484	+199%	275
Certificate 29 or fewer units	169	156	216	280	358	+112%	236
Total	961	1,072	1,131	1,336	1,650	+72%	1,230

Source: CCCC Data Mart: https://datamart.ccco.edu/Outcomes/Program_Awards.aspx

On average, between 2015-16 and 2019-20, 57.9% of total awards conferred at Crafton Hills College were associate degrees and 42.1% were certificates. Over this period, the number of associate degrees conferred has increased 28%, from 625 in 2015-16 to 801 in 2019-20, and the number of certificates conferred has increased 153%, from 336 in 2015-16 to 849 in 2019-20.

Awards and Certificates: San Bernardino Valley College

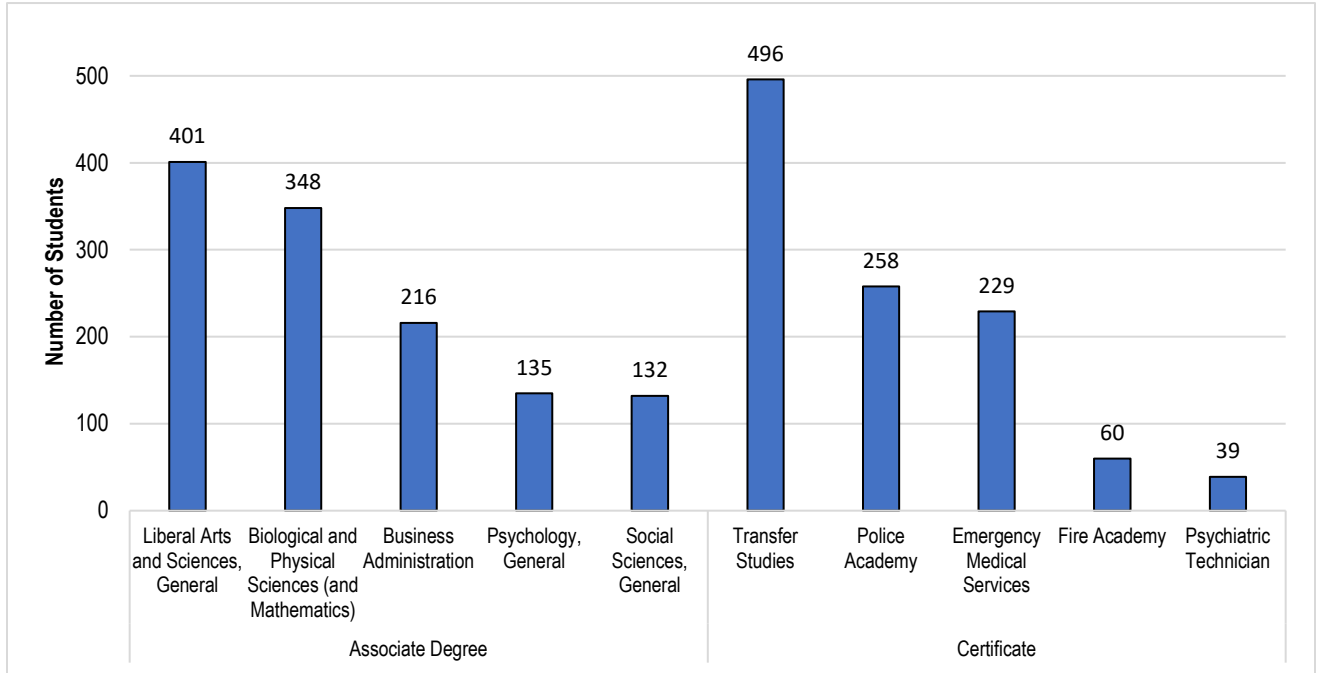


Total Headcount	2015-16	2016-17	2017-18	2018-19	2019-20	5 Year Change	5 Year Average
Degree	1,068	1,369	1,305	1,294	1,565	+47%	1,320
AA-T/AS-T	198	309	366	359	478	+141%	342
AA/AS Degree	870	1,060	939	935	1,087	+25%	978
Certificate	375	385	344	601	594	+58%	460
Certificate 60 or more units	5	11	3	6	5	-45%	7
Certificate 30 to 59 units	231	217	223	486	460	+159%	269
Certificate 29 or fewer units	139	157	118	108	129	-27%	134
Noncredit Award				1			
Total	1,443	1,754	1,649	1,895	2,159	+50%	1,780

Source: CCCCO Data Mart: https://datamart.cccco.edu/Outcomes/Program_Awards.aspx

On average, between 2015-16 and 2019-20, 74.2% of total awards conferred at SBVC were associate degrees and 25.8% were certificates. Over this period, the number of associate degrees conferred has increased 47%, from 1,068 in 2015-16 to 1,565 in 2019-20, and the number of certificates conferred has increased 58%, from 375 in 2015-16 to 594 in 2019-20.

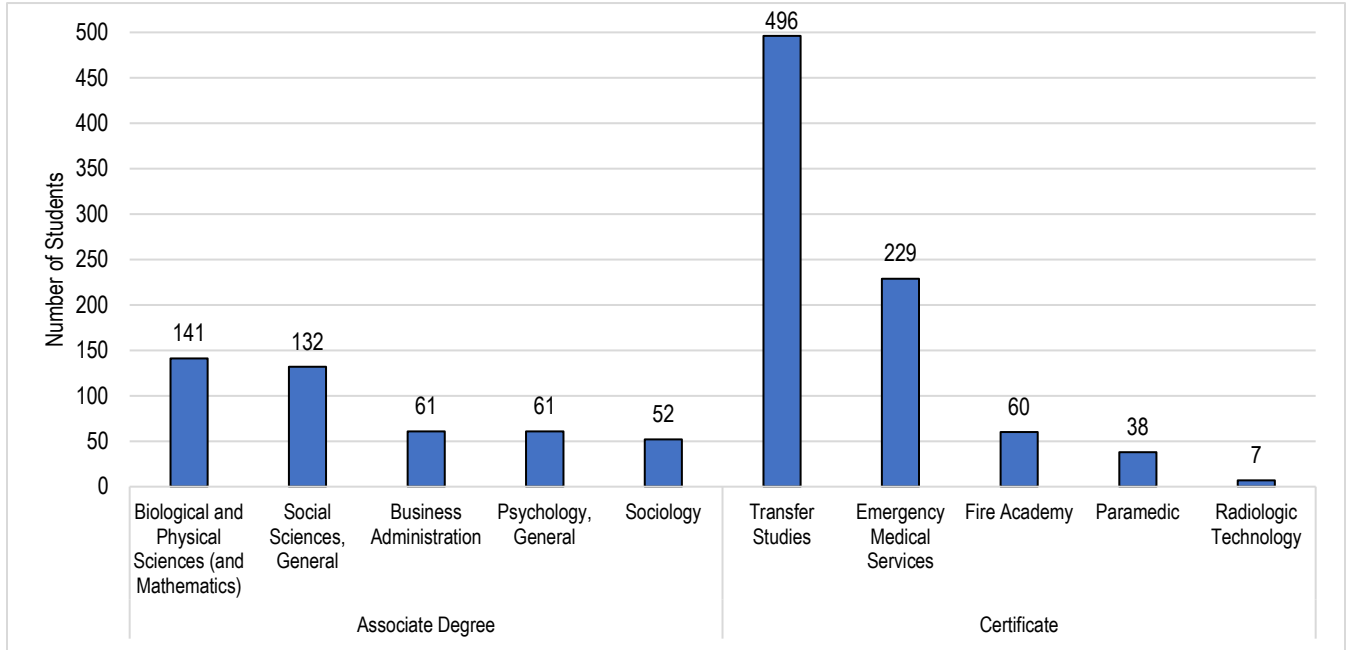
Awards and Certificates By Program, 2019-20: SBCCD



Rank	Associate Degree Top Program	Count (N=2,366)	Percent
1	Liberal Arts and Sciences, General	401	16.9%
2	Biological and Physical Sciences (and Mathematics)	348	14.7%
3	Business Administration	216	9.1%
4	Psychology, General	135	5.7%
5	Social Sciences, General	132	5.6%
6	Sociology	108	4.6%
7	Mathematics, General	83	3.5%
8	Administration of Justice	81	3.4%
9	Registered Nursing	81	3.4%
10	Preschool Age Children	48	2.0%
11	Accounting	47	2.0%
12	English	46	1.9%
13	Speech Communication	46	1.9%
14	Physics, General	40	1.7%
15	History	39	1.6%

Rank	Certificate Top Program	Count (N=1,443)	Percent
1	Transfer Studies	496	34.4%
2	Police Academy	258	17.9%
3	Emergency Medical Services	229	15.9%
4	Fire Academy	60	4.2%
5	Psychiatric Technician	39	2.7%
6	Paramedic	38	2.6%
7	Environmental Control Technology	26	1.8%
8	Accounting	25	1.7%
9	Alcohol and Controlled Substances	24	1.7%
10	Diesel Technology	20	1.4%
	Preschool Age Children	20	1.4%
12	Automotive Collision Repair	17	1.2%
	Electronics and Electric Technology	17	1.2%
14	Culinary Arts	15	1.0%
15	Electrical Systems and Power Transmission	11	0.8%

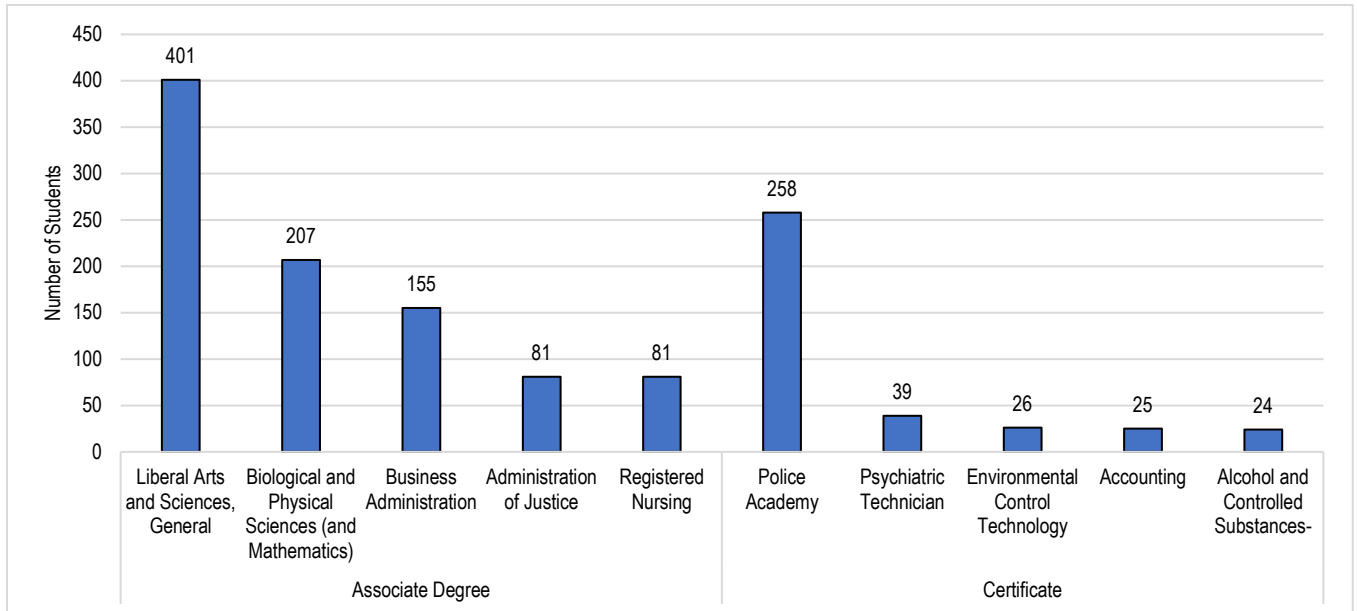
Awards and Certificates By Program, 2019-20: Crafton Hills College



Rank	Associate Degree Top Program	Count (N=801)	Percent
1	Biological and Physical Sciences (and Mathematics)	141	17.6%
2	Social Sciences, General	132	16.5%
3	Business Administration	61	7.6%
	Psychology, General	61	7.6%
5	Sociology	52	6.5%
6	Mathematics, General	44	5.5%
7	History	39	4.9%
8	Respiratory Care/Therapy	32	4.0%
9	English	27	3.4%
10	Speech Communication	26	3.2%
11	Anthropology	17	2.1%
12	Computer Science (Transfer)	14	1.7%
	Kinesiology	14	1.7%
14	Physics, General	13	1.6%
	Spanish	13	1.6%

Rank	Certificate Top Program	Count (N=849)	Percent
1	Transfer Studies	496	58.4%
2	Emergency Medical Services	229	27.0%
3	Fire Academy	60	7.1%
4	Paramedic	38	4.5%
5	Radiologic Technology	7	0.8%
6	Child Development/Early Care and Education	6	0.7%
7	Sign Language	5	0.6%
8	Computer Graphics and Digital Imagery	3	0.4%
9	Computer Information Systems	2	0.2%
	Other Information Technology	2	0.2%
11	Music	1	0.1%

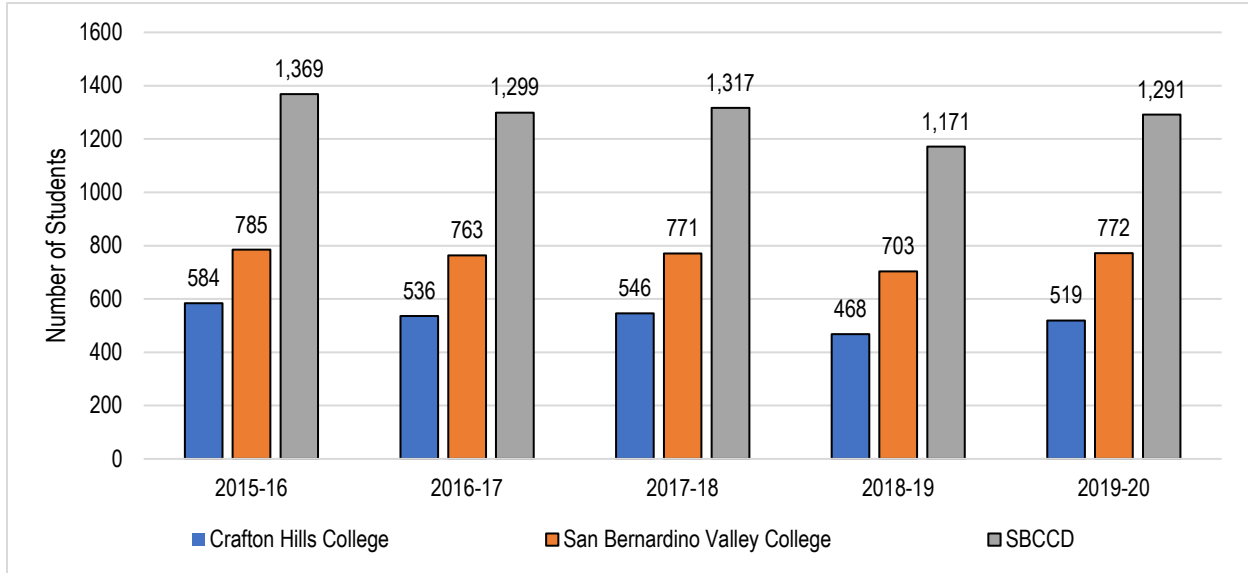
Awards and Certificates By Program, 2019-20: San Bernardino Valley College



Rank	Associate Degree Top Program	Count (N=1565)	Percent
1	Liberal Arts and Sciences, General	401	25.6%
2	Biological and Physical Sciences (and Mathematics)	207	13.2%
3	Business Administration	155	9.9%
4	Administration of Justice	81	5.2%
	Registered Nursing	81	5.2%
6	Psychology, General	74	4.7%
7	Sociology	56	3.6%
8	Preschool Age Children	48	3.1%
9	Accounting	47	3.0%
10	Mathematics, General	39	2.5%
11	Human Services	35	2.2%
12	Psychiatric Technician	32	2.0%
13	Physics, General	27	1.7%
14	Child Development/Early Care and Education	24	1.5%
15	Speech Communication	20	1.3%

Rank	Certificate Top Program	Count (N=594)	Percent
1	Police Academy	258	43.4%
2	Psychiatric Technician	39	6.6%
3	Environmental Control Technology	26	4.4%
4	Accounting	25	4.2%
5	Alcohol and Controlled Substances-	24	4.0%
	Diesel Technology	20	3.4%
6	Preschool Age Children	20	3.4%
	Automotive Collision Repair	17	2.9%
8	Electronics and Electric Technology	17	2.9%
	Culinary Arts	15	2.5%
11	Electrical Systems and Power Transmission	11	1.9%
	Graphic Art and Design	11	1.9%
13	Water and Wastewater Technology	10	1.7%
14	Automotive Technology	8	1.3%
	Aviation Airframe Mechanics	8	1.3%
	Library Technician (Aide)-160200	8	1.3%

Annual Transfer Volume*, 2015-2016 through 2019-2020



	2015-16	2016-17	2017-18	2018-19	2019-20	5 Year Change	5 Year Average
Crafton Hills College	584	536	546	468	519	-11.1%	531
San Bernardino Valley College	785	763	771	703	772	-1.7%	749
SBCCD (Total)	1,369	1,299	1,317	1,171	1,291	-5.7%	1,290

*Note: Total number of Students Transferring to UC, CSU, out-of-state, and state private institutions

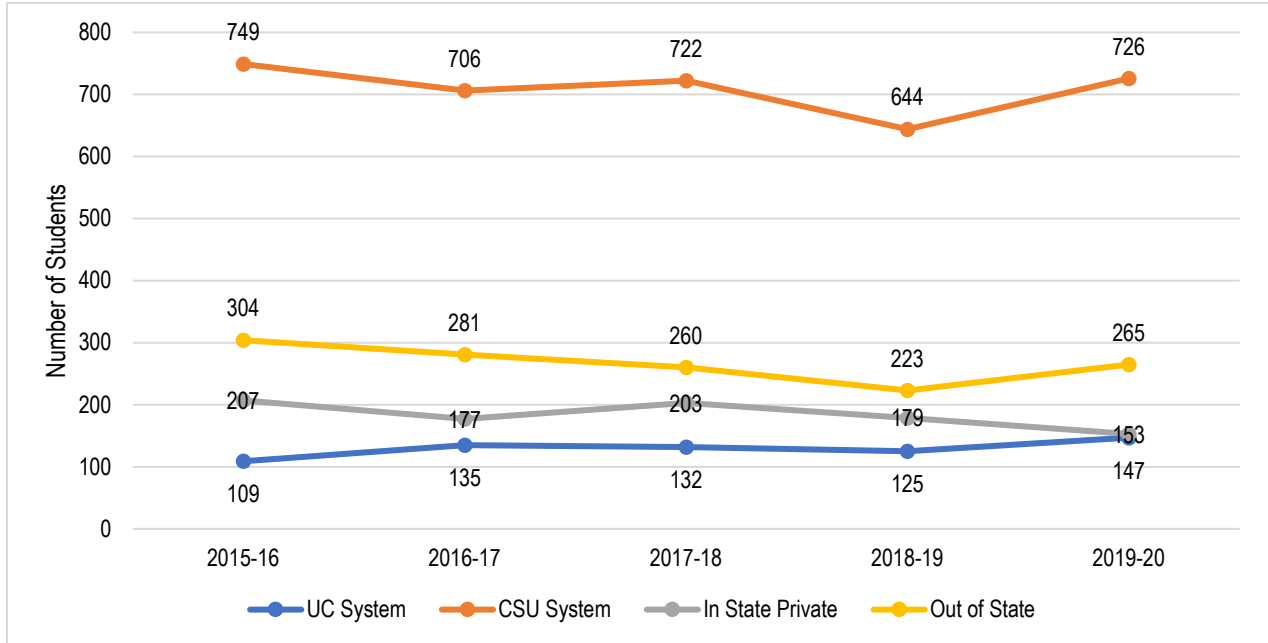
Sources: 1. Datamart Transfer Volume to In-State Private (ISP) and Out-of-State (OOS)

2. Volume of transfers to UC: <https://www.universityofcalifornia.edu/infocenter/admissions-source-school>

3. Volume of transfers to CSU: <http://www.calstate.edu/as/ccct/index.shtml>

Between 2015-16 and 2019-20, the annual transfer volume for SBCCD declined by 5.7%, from 1,369 in 2015-16 to 1,291 in 2019-20, with a five-year average of 1,290.

Transfer Volume (CSU, UC, In-State, and Out-of-State): SBCCD



	2015-16		2016-17		2017-18		2018-19		2019-20		5 Year Change	5 Year Average
UC System	109	8%	135	10%	132	10%	125	11%	147	11%	+34.9%	130
CSU System	749	55%	706	54%	722	55%	644	55%	726	56%	-3.1%	709
In State Private	207	15%	177	14%	203	15%	179	15%	153	12%	-26.1%	184
Out of State	304	22%	281	22%	260	20%	233	19%	265	21%	-12.8%	267
Total	1,369	100%	1,299	100%	1,317	100%	1,171	100%	1,291	100%	-5.7%	1,289

Sources: 1. Datamart Transfer Volume to In-State Private (ISP) and Out-of-State (OOS)

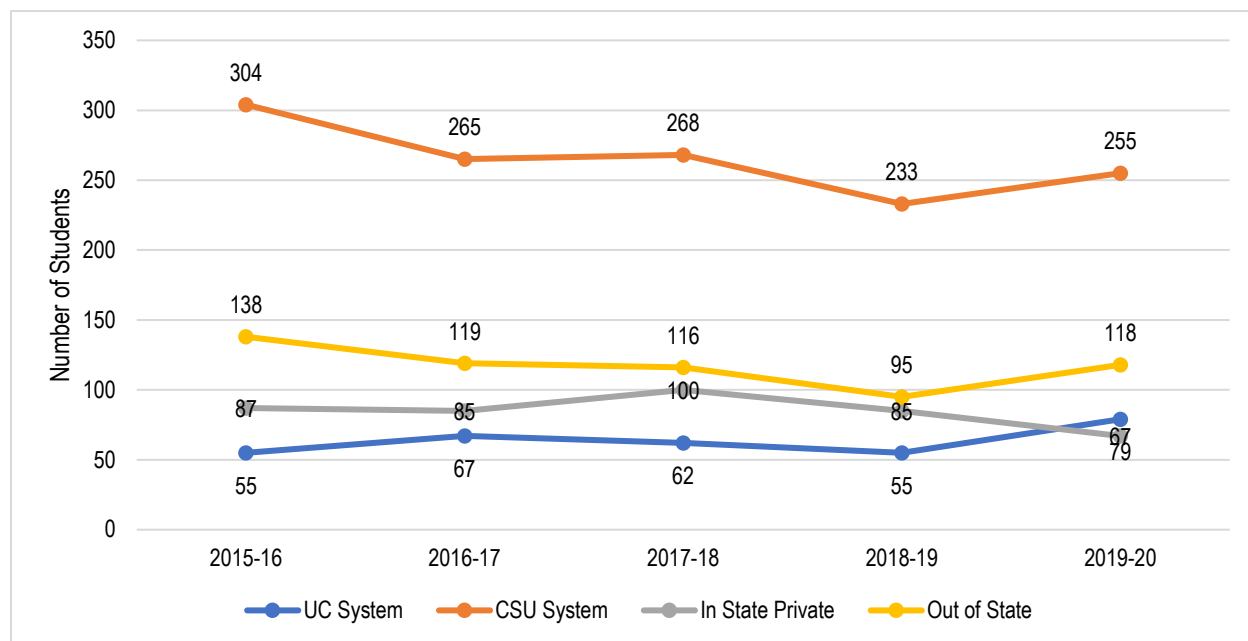
2. Volume of transfers to UC: <https://www.universityofcalifornia.edu/infocenter/admissions-source-school>

3. Volume of transfers to CSU: <http://www.calstate.edu/as/ccct/index.shtml>

Between 2015-16 and 2019-20, the annual transfer volume for SBCCD declined by 5.7%, from 1,369 in 2015-16 to 1,291 in 2019-20, with a five-year average of 1,289. Transfer volume increased to the UC system (+34.9%), while there was a decrease in transfer volume to the CSU system (-3.1%), out-of-state institutions (-24.7%), and in state private institutions (-18.6%).

Over this period, of total students who transferred from both colleges in the District, on average, 55% transferred to the California State University (CSU), followed by students who transferred to out-of-state institutions (21%), in-state private institutions (14%), and the University of California System (10%).

Transfer Volume (CSU, UC, In-State, and Out-of-State): Crafton Hills College



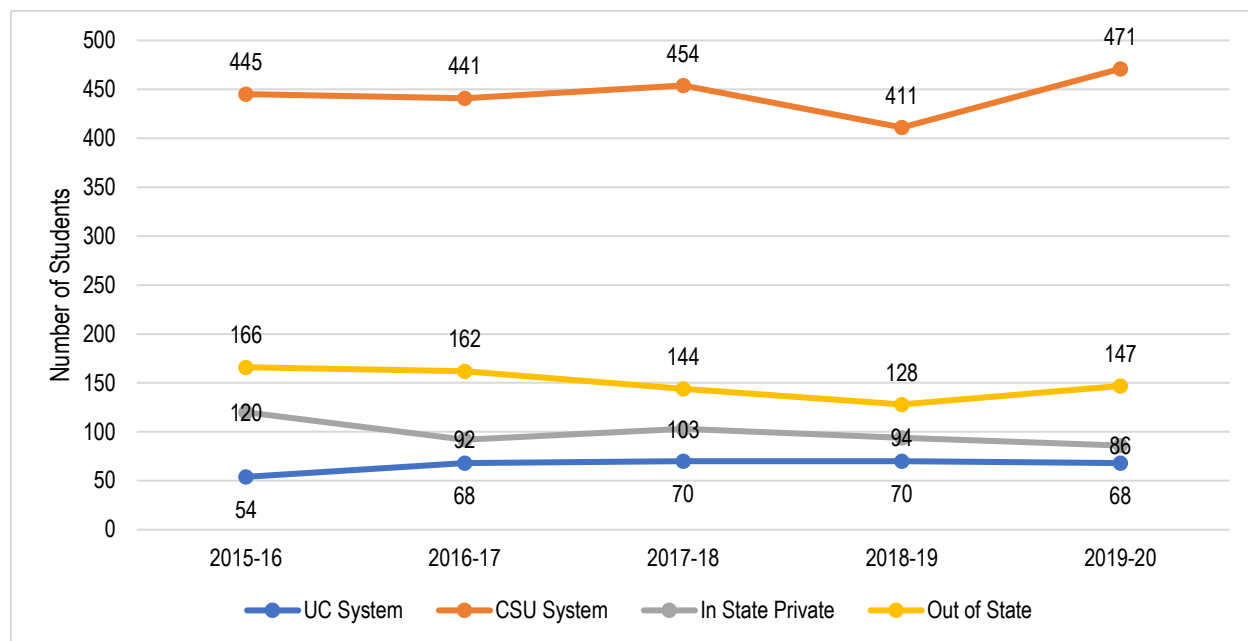
	2015-16		2016-17		2017-18		2018-19		2019-20		5 Year Change	5 Year Average
UC System	55	9%	67	13%	62	11%	55	12%	79	15%	+43.6%	64
CSU System	304	52%	265	49%	268	49%	233	50%	255	49%	-16.1%	265
In State Private	87	15%	85	16%	100	18%	85	18%	67	13%	-23.0%	85
Out of State	138	24%	119	22%	116	21%	95	20%	118	23%	-14.5%	117
Total	584	100%	536	100%	546	100%	468	100%	519	100%	-11.1%	531

Sources: 1. Datamart Transfer Volume to In-State Private (ISP) and Out-of-State (OOS)
 2. Volume of transfers to UC: <https://www.universityofcalifornia.edu/infocenter/admissions-source-school>
 3. Volume of transfers to CSU: <http://www.calstate.edu/as/ccct/index.shtml>

Between 2015-16 and 2019-20, the annual transfer volume for Crafton Hills College declined by 11.4%, from 584 in 2015-16 to 519 in 2019-20, with a five-year average of 531. Transfer volume increased to the UC system (+43.6%), while there was a decrease in transfer volume to the CSU system (-16.1%), out-of-state institutions (-14.5%), and in state private institutions (-23.0%).

Over this period, of total students who transferred, on average, 50% transferred to the California State University (CSU), followed by students who transferred to out-of-state institutions (22%), in-state private institutions (16%), and the University of California System (12%).

Transfer Volume (CSU, UC, In-State, and Out-of-State): San Bernardino Valley College



	2015-16		2016-17		2017-18		2018-19		2019-20		5 Year Change	5 Year Average
UC System	54	7%	68	9%	70	9%	70	10%	68	9%	+25.9%	66
CSU System	445	57%	441	58%	454	58%	411	60%	471	61%	+5.8%	450
In State Private	120	15%	92	12%	103	12%	94	13%	86	11%	-28.3%	99
Out of State	166	21%	162	21%	144	21%	128	17%	147	19%	-11.4%	149
Total	785	100%	763	100%	771	100%	703	100%	772	100%	-1.7%	765

Sources: 1. Datamart Transfer Volume to In-State Private (ISP) and Out-of-State (OOS)

2. Volume of transfers to UC: <https://www.universityofcalifornia.edu/infocenter/admissions-source-school>

3. Volume of transfers to CSU: <http://www.calstate.edu/as/ccct/index.shtml>

Between 2015-16 and 2019-20, the annual transfer volume for San Bernardino Valley College declined by 1.7%, from 785 in 2015-16 to 772 in 2019-20, with a five-year average of 765. Transfer volume increased to the CSU system (+5.8%) and the UC system (+25.9%), while there was a decrease in transfer volume to in state private institutions (-28.3%), and out-of-state institutions (-11.4%).

Over this period, of total students who transferred, on average, 59% transferred to the California State University (CSU), followed by students who transferred to out-of-state institutions (20%), in-state private institutions (13%), and the University of California System (9%).

Top Ten Transfers to a Four-Year University: 2019-20

SBCCD

Ranking	University	Students (N=1,291)	Percent
1	CSU-San Bernardino	549	42.5%
2	UC-Riverside	93	7.2%
3	CSU-Pomona	59	4.6%
4	California Baptist University	34	2.6%
5	West Coast University-Los Angeles	29	2.2%
6	Western Governors University	28	2.2%
7	CSU-Fullerton	25	1.9%
8	Grand Canyon University	24	1.9%
8	University Of Phoenix-Arizona	19	1.5%
10	University Of Redlands	18	1.4%

Crafton Hills College

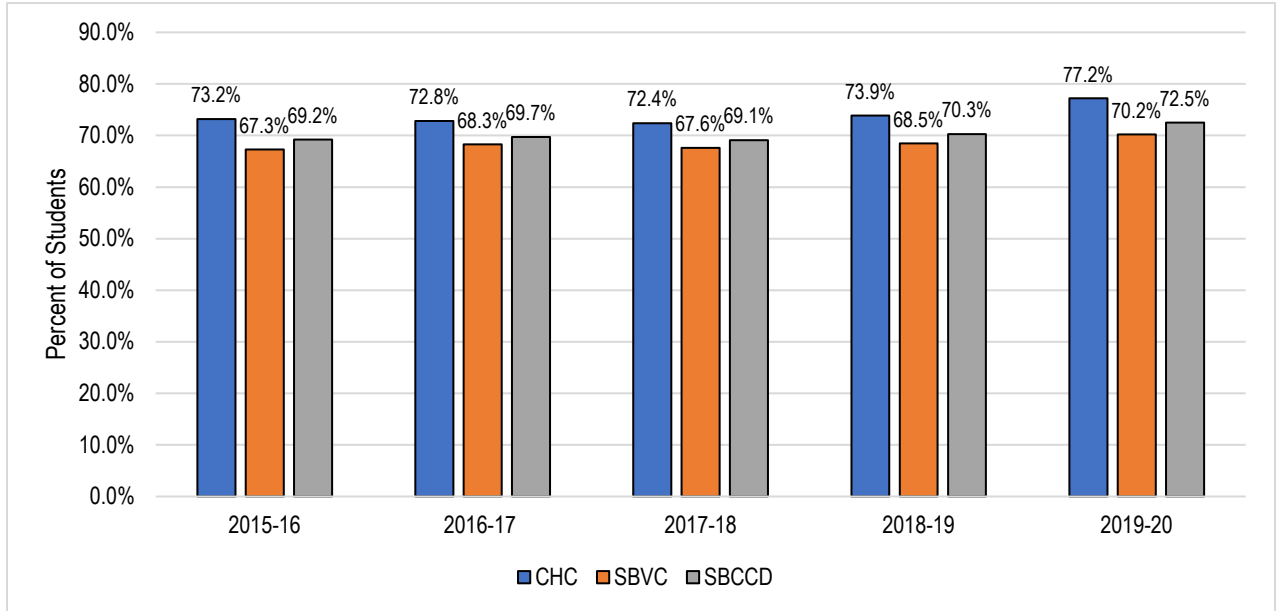
Ranking	University	Students (N=519)	Percent
1	CSU-San Bernardino	190	36.6%
2	UC Riverside	46	8.9%
3	California Baptist University	18	3.5%
4	Thunderbird School Of Global Management	13	2.5%
5	CSU-Pomona	12	2.3%
6	Western Governors University	11	2.1%
6	CSU-Long Beach	11	2.1%
8	CSU-Fullerton	10	1.9%
8	West Coast University-Los Angeles	10	1.9%
8	Grand Canyon University	10	1.9%

San Bernardino Valley College

Ranking	University	Students (N=772)	Percent
1	CSU-San Bernardino	359	46.5%
2	UC Riverside	47	6.1%
2	CSU-Pomona	47	6.1%
4	Grand Canyon University	21	2.7%
5	West Coast University-Los Angeles	19	2.5%
6	Western Governors University	17	2.2%
7	California Baptist University	16	2.1%
8	Grand Canyon University	14	1.8%
9	Southern New Hampshire University	11	1.4%
9	University Of Phoenix-Arizona	11	1.4%

Sources: 1. Datamart Transfer Volume to In-State Private (ISP) and Out-of-State (OOS)
 2. Volume of transfers to UC: <https://www.universityofcalifornia.edu/infocenter/admissions-source-school>
 3. Volume of transfers to CSU: <http://www.calstate.edu/as/ccct/index.shtml>

Course Success Rates



	2015-16	2016-17	2017-18	2018-19	2019-20	5 Year Change	5 Year Average
Crafton Hills College	73.2%	72.8%	72.4%	73.9%	77.2%	+4.0%	73.9%
San Bernardino Valley College	67.3%	68.3%	67.6%	68.5%	70.2%	+2.9%	68.4%
San Bernardino CCD	69.2%	69.7%	69.1%	70.3%	72.5%	+3.3%	70.2%

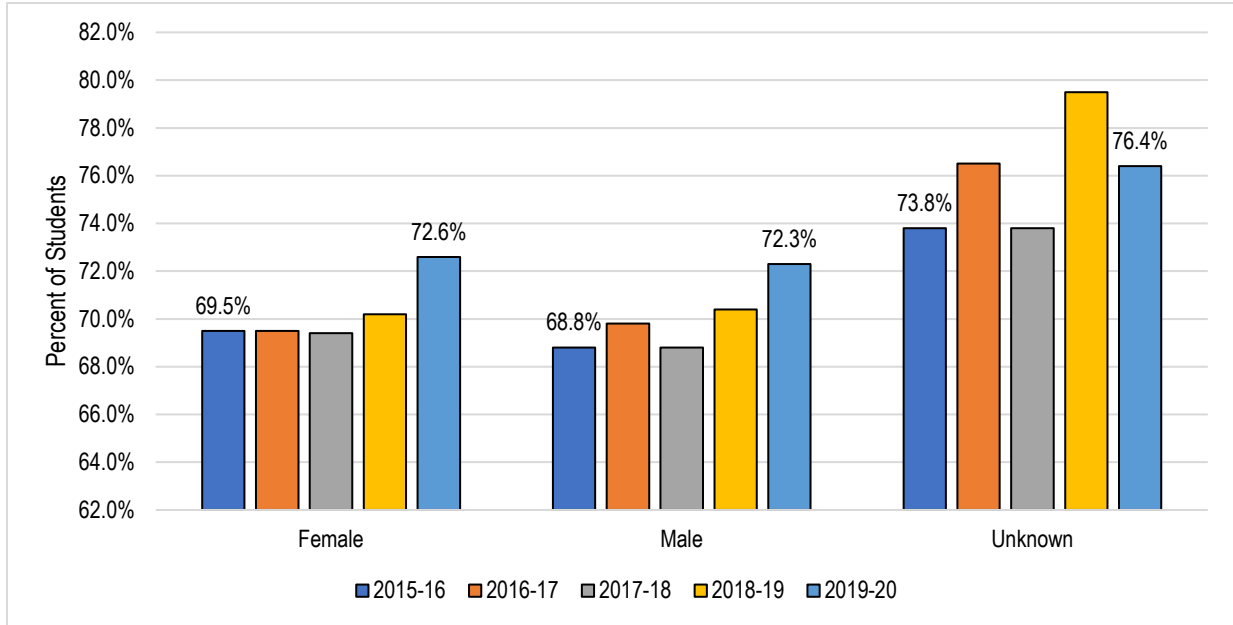
Source: CCCC MIS Referential Data Files.

Success Rate = (A, B, C, P, IA, IB, IC, and IPP Grades / A, B, C, D, F, P, NP, I*, IPP, INP, FW, and W Grades) * 100

Note that Excused withdrawal "EW" occurs when a student is permitted to withdraw from a course(s) due to COVID-19 crisis. This grade is not counted as an enrollment attempt.

Between 2015-16 and 2019-20, the annual success rate of students from both colleges in the District increased by 3.3 percent points, from 69.2% in 2015-16 to 72.5% in 2019-20, with a five-year average of 70.2%.

Course Success Rates by Gender: SBCCD

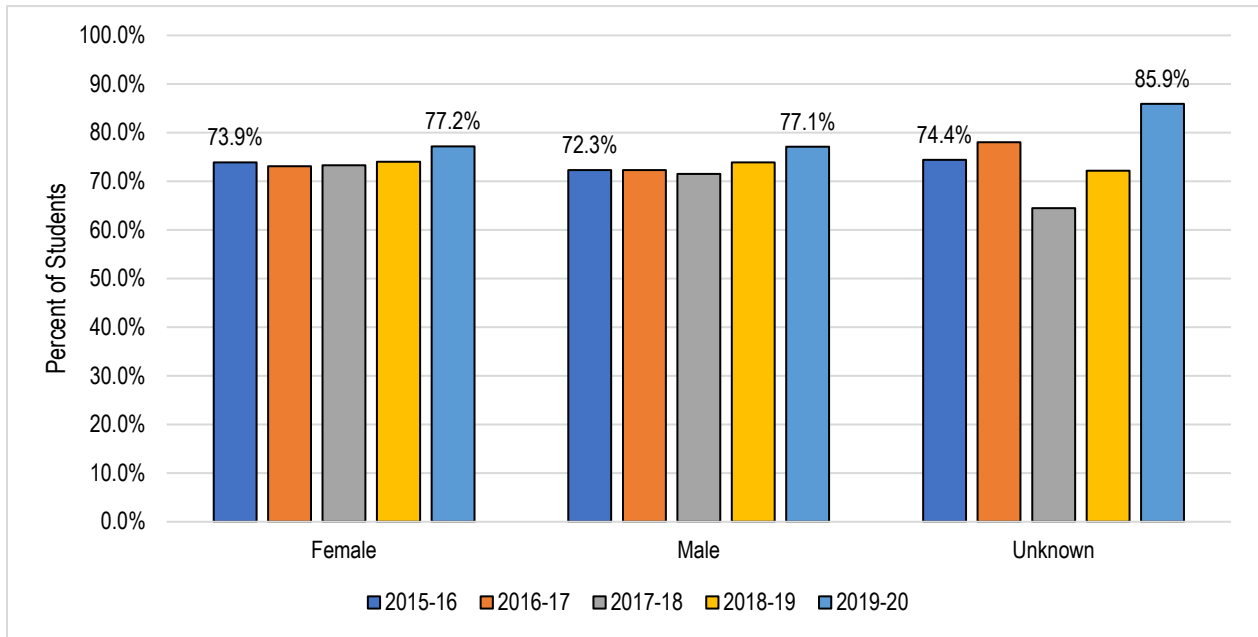


	2015-16	2016-17	2017-18	2018-19	2019-20	5 Year Change	5 Year Average
Female	69.5%	69.5%	69.4%	70.2%	72.6%	+3.1%	70.3%
Male	68.8%	69.8%	68.8%	70.4%	72.3%	+3.5%	70.0%
Unknown	73.8%	76.5%	73.8%	79.5%	76.4%	+2.6%	76.1%
Total	69.2%	69.7%	69.1%	70.3%	72.5%	+3.3%	70.2%

Source: CCCC MIS Referential Data Files.

On average, between 2015-16 and 2019-20, female and male students had similar success (70.3% & 70.0%, respectively). Over this period, the success rates for female and male students increased by 3.1% and 3.5%, respectively.

Course Success Rates by Gender: Crafton Hills College

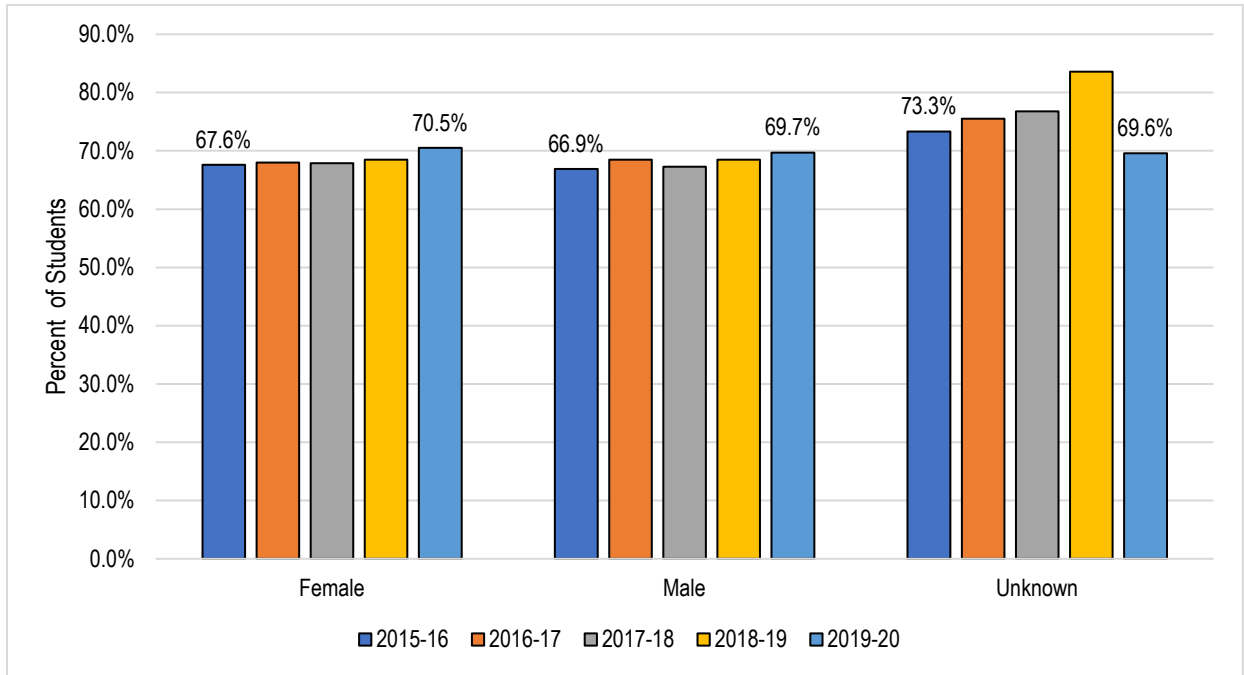


	2015-16	2016-17	2017-18	2018-19	2019-20	5 Year Change	5 Year Average
Female	73.9%	73.1%	73.3%	74.0%	77.2%	+3.3%	74.3%
Male	72.3%	72.3%	71.5%	73.9%	77.1%	+4.8%	73.4%
Unknown	74.4%	78.0%	64.5%	72.2%	85.9%	+11.5%	75.9%
Total	73.2%	72.8%	72.4%	73.9%	77.2%	+4.0%	73.9%

Source: CCCC MIS Referential Data Files.

On average, between 2015-16 and 2019-20, female students had a higher success rate than male students (74.3% vs 73.4%, respectively). Over this period, the success rates for female and male students increased by 3.3% and 4.8%, respectively.

Course Success Rates by Gender: San Bernardino Valley College

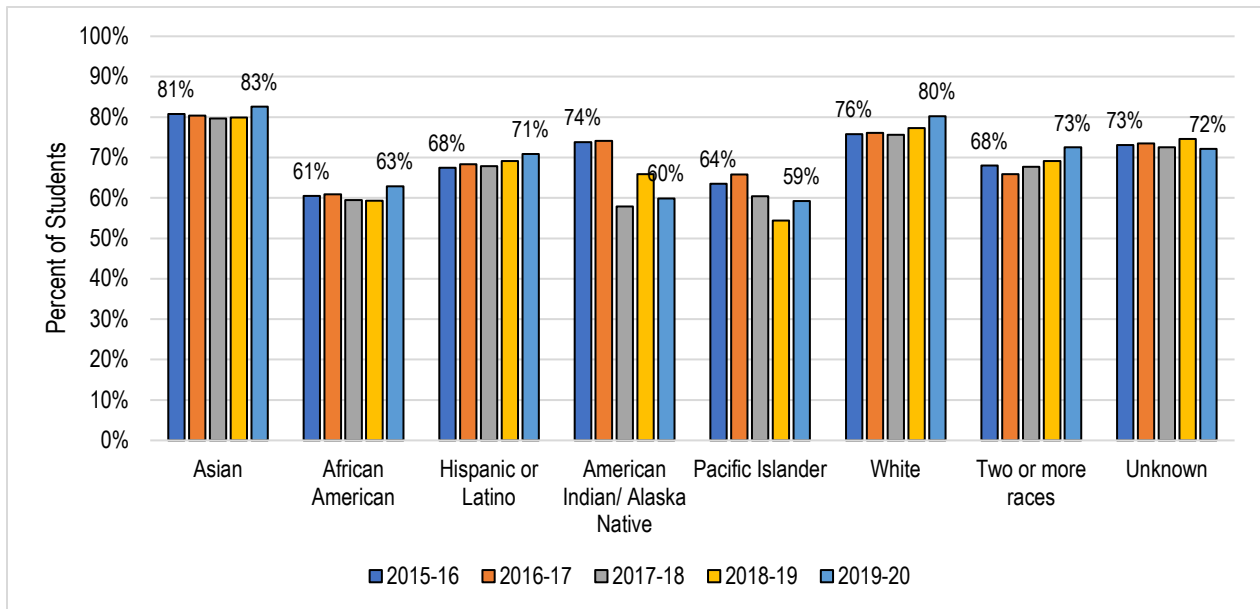


	2015-16	2016-17	2017-18	2018-19	2019-20	5 Year Change	5 Year Average
Female	67.6%	68.0%	67.9%	68.5%	70.5%	+2.9%	68.5%
Male	66.9%	68.5%	67.3%	68.5%	69.7%	+2.8%	68.2%
Unknown	73.3%	75.5%	76.8%	83.6%	69.6%	-3.7%	76.2%
Total	67.3%	68.3%	67.6%	68.5%	70.2%	+2.9%	68.4%

Source: CCCC MIS Referential Data Files.

On average, between 2015-16 and 2019-20, female and male students had similar success (68.5% & 68.2%, respectively). Over this period, the success rates for female and male students increased by 2.9% and 2.8%, respectively.

Course Success Rates by Race/Ethnicity: SBCCD



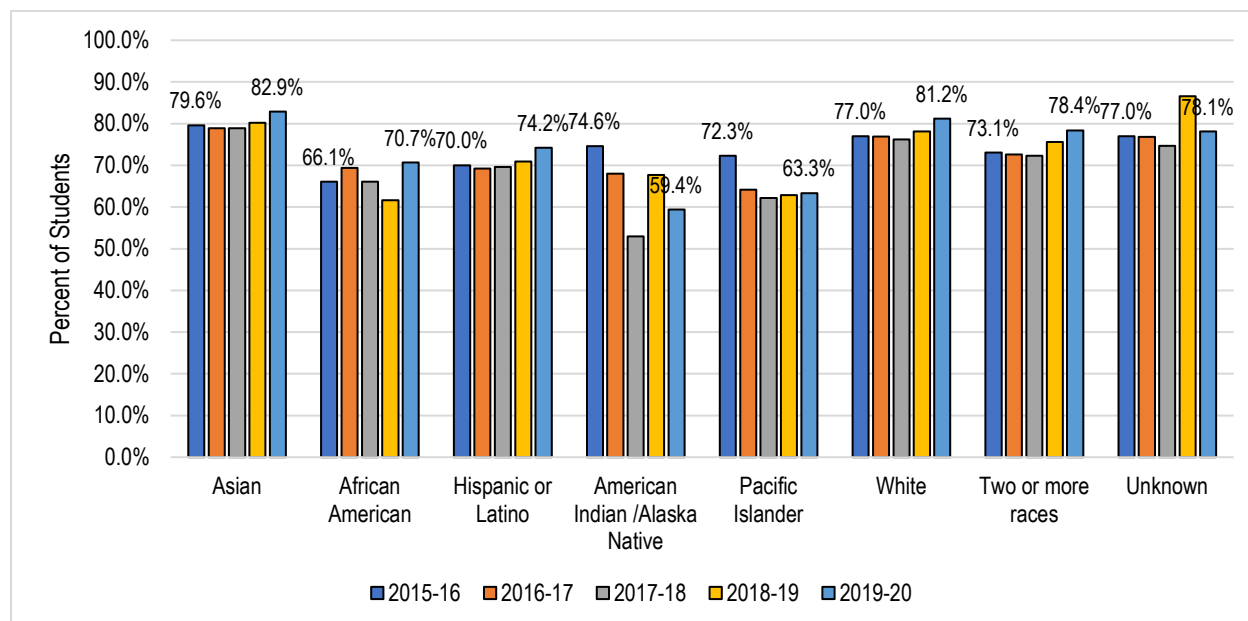
	2015-16	2016-17	2017-18	2018-19	2019-20	5 Year Change	5 Year Average
Asian	80.8%	80.4%	79.7%	79.9%	82.6%	+1.8%	80.7%
African American	60.5%	60.9%	59.5%	59.3%	62.9%	+2.4%	60.6%
Hispanic or Latino	67.5%	68.3%	67.9%	69.1%	70.9%	+3.4%	68.8%
American Indian /Alaska Native	73.8%	74.1%	57.9%	65.9%	59.9%	-13.9%	67.0%
Pacific Islander	63.5%	65.8%	60.4%	54.4%	59.2%	-4.3%	60.8%
White	75.8%	76.1%	75.6%	77.3%	80.2%	+4.4%	76.9%
Two or more races	68.0%	65.9%	67.7%	69.1%	72.5%	+4.5%	68.7%
Unknown	73.1%	73.5%	72.5%	74.6%	72.1%	-1.0%	72.7%
Total Average	69.2%	69.7%	69.1%	70.3%	72.5%	+3.3%	70.2%

Source: CCCC MIS Referential Data Files.

On average, between 2015-16 and 2019-20, Asian students had the highest success rate (80.7%). The second highest were White students with 76.9%. The lowest were African American students with 60.6%.

Over this period, the success rates of Multiracial (+4.5%), White (+4.4%), Hispanic (+3.4%), African American (+2.4%), and Asian (+1.8%) students increased while the success rates of American Indian/Alaska Native (-11.3%) and Pacific Islander (-4.3%) students decreased.

Course Success Rates by Race/Ethnicity: Crafton Hills College



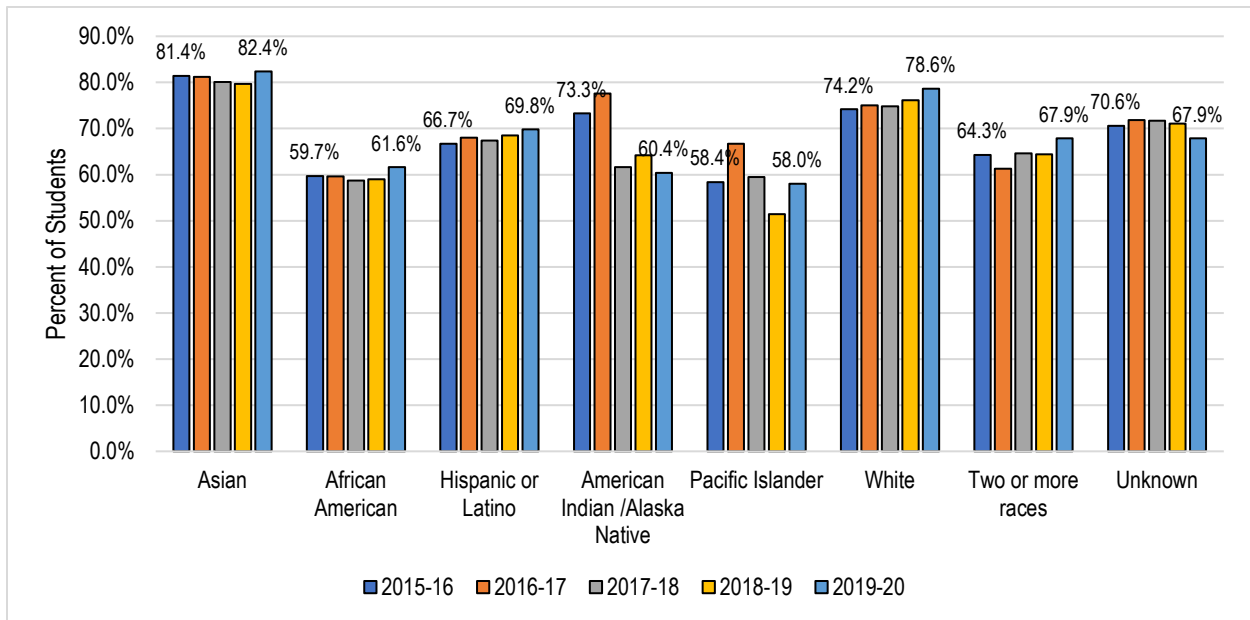
	2015-16	2016-17	2017-18	2018-19	2019-20	5 Year Change	5 Year Average
Asian	79.6%	78.9%	78.9%	80.2%	82.9%	+3.3%	80.2%
African American	66.1%	69.4%	66.1%	61.6%	70.7%	+4.6%	66.8%
Hispanic or Latino	70.0%	69.2%	69.6%	70.9%	74.2%	+4.2%	70.8%
American Indian /Alaska Native	74.6%	68.0%	53.0%	67.7%	59.4%	-15.2%	64.5%
Pacific Islander	72.3%	64.2%	62.2%	62.9%	63.3%	-9.0%	65.4%
White	77.0%	76.9%	76.2%	78.1%	81.2%	+1.4%	77.8%
Two or more races	73.1%	72.6%	72.3%	75.6%	78.4%	+8.1%	74.5%
Unknown	77.0%	76.8%	74.7%	86.6%	78.1%	+1.1%	77.1%
Total Average	73.2%	72.8%	72.4%	73.9%	77.2%	+4.0%	73.9%

Source: CCCC MIS Referential Data Files.

On average, between 2015-16 and 2019-20, Asian students had the highest success rate (80.2%). The second highest were White students with 77.8%. The lowest were American Indian /Alaska Native students with 64.5%.

Over this period, the success rates of Multiracial (+8.1%), African American (+4.6%), Hispanic (+4.2%), Asian (+3.3%), and White students increased while the success rates of American Indian /Alaska Native (-15.2%) and Pacific Islander (-9.0%) students decreased.

Course Success Rates by Race/Ethnicity: San Bernardino Valley College



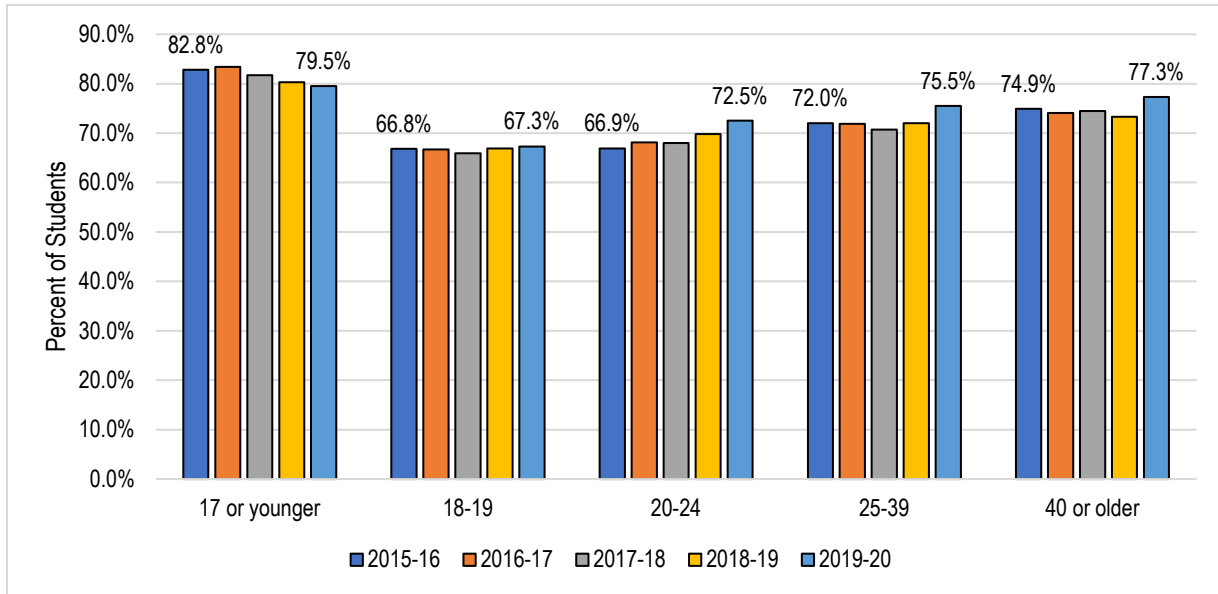
	2015-16	2016-17	2017-18	2018-19	2019-20	5 Year Change	5 Year Average
Asian	81.4%	81.2%	80.1%	79.7%	82.4%	+1.0%	81.0%
African American	59.7%	59.6%	58.7%	59.0%	61.6%	+1.9%	59.7%
Hispanic or Latino	66.7%	68.0%	67.4%	68.5%	69.8%	+3.1%	68.1%
American Indian /Alaska Native	73.3%	77.6%	61.6%	64.2%	60.4%	-12.9%	68.9%
Pacific Islander	58.4%	66.7%	59.5%	51.4%	58.0%	-0.4%	58.7%
White	74.2%	75.0%	74.8%	76.1%	78.6%	+4.4%	75.6%
Two or more races	64.3%	61.3%	64.6%	64.4%	67.9%	+3.6%	64.5%
Unknown	70.6%	71.8%	71.7%	71.1%	67.9%	-2.7%	69.6%
Total Average	67.3%	68.3%	67.6%	68.5%	70.2%	+2.9%	68.4%

Source: CCCC MIS Referential Data Files.

On average, between 2015-16 and 2019-20, Asian students had the highest success rate (81.0%). The second highest were multiracial students with 75.6%. The lowest were Pacific Islander students with 58.7%.

Over this period, the success rates of White (+4.4%), Hispanic (+3.1%), Multiracial (+3.6%), African American (+1.9%), and Asian (+1.0%) students increased, while the success rate of American Indian /Alaska Native (-12.9%), and Pacific Islander (-0.4%) students decreased.

Course Success Rates by Age: SBCCD



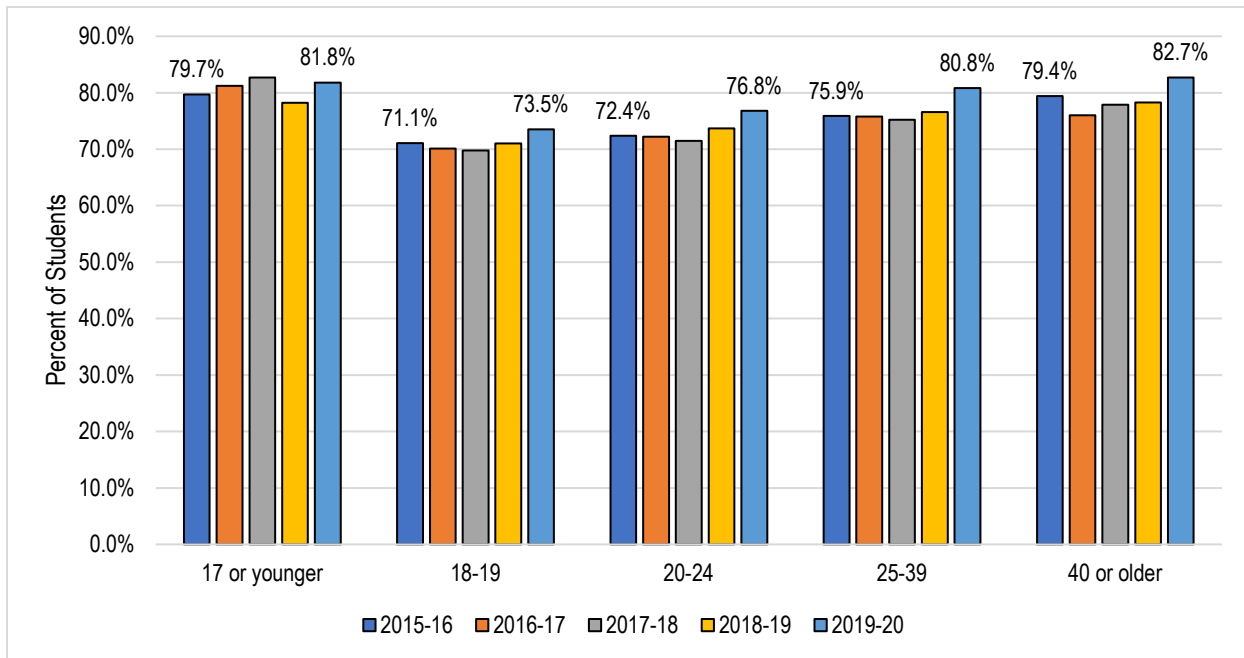
	2015-16	2016-17	2017-18	2018-19	2019-20	5 Year Change	5 Year Average
17 or younger	82.8%	83.4%	81.7%	80.3%	79.5%	-3.3%	81.4%
18-19	66.8%	66.7%	65.9%	66.9%	67.3%	+0.5%	66.7%
20-24	66.9%	68.1%	68.0%	69.8%	72.5%	+5.6%	69.0%
25-39	72.0%	71.9%	70.7%	72.0%	75.5%	+3.5%	72.4%
40 or older	74.9%	74.1%	74.5%	73.3%	77.3%	+2.4%	74.8%
Total Average	69.2%	69.7%	69.1%	70.3%	72.5%	+3.3%	70.2%

Source: CCCC MIS Referential Data Files.

On average, between 2015-16 and 2019-20, students under 17 years old had the highest success rate (81.4%). The lowest success rate was seen in students 18-19 years old (66.7%) and students 20-24 years old (69.0%).

Over this period, the success rate of students 20-24 years old (+5.6%), students 25-39 years old (+3.5%), students over 40 years old (+2.4%), and students 18-19 years old (+0.5%) increased while the success rates of students under 17 years old (-3.3%) decreased.

Course Success Rates by Age: Crafton Hills College



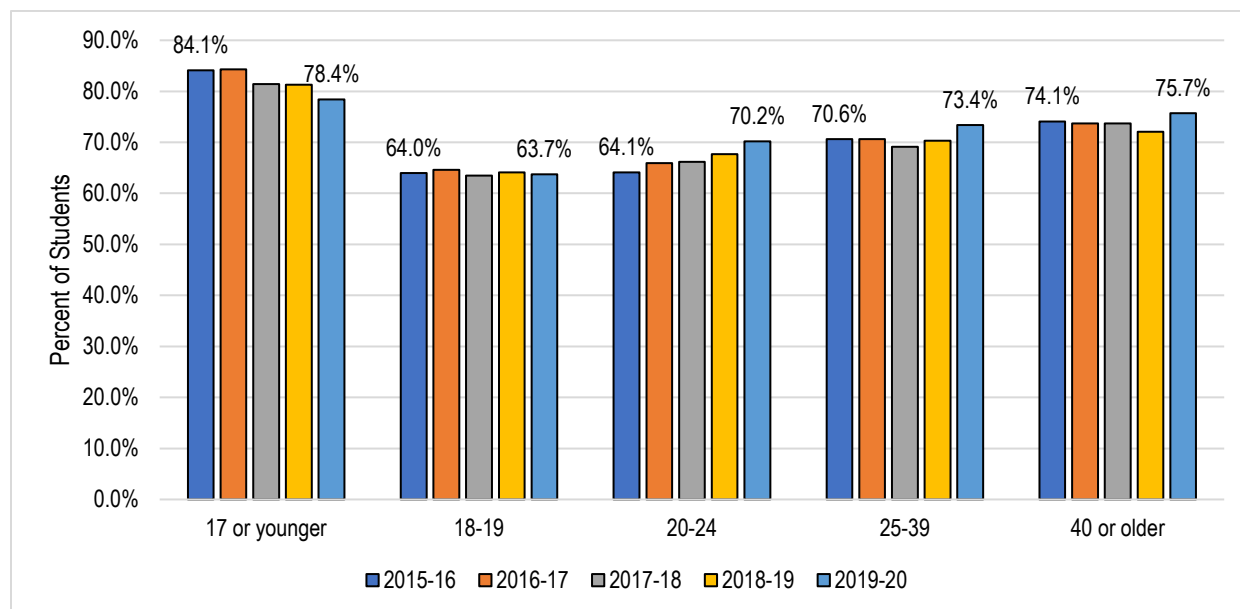
	2015-16	2016-17	2017-18	2018-19	2019-20	5 Year Change	5 Year Average
17 or younger	79.7%	81.2%	82.7%	78.2%	81.8%	+2.1%	80.7%
18-19	71.1%	70.1%	69.8%	71.0%	73.5%	+2.4%	71.2%
20-24	72.4%	72.2%	71.5%	73.7%	76.8%	+4.4%	73.2%
25-39	75.9%	75.8%	75.2%	76.6%	80.8%	+4.9%	76.9%
40 or older	79.4%	76.0%	77.9%	78.3%	82.7%	+3.3%	79.1%
Total Average	73.2%	72.8%	72.4%	73.9%	77.2%	+4.0%	73.9%

Source: CCCC MIS Referential Data Files.

On average, between 2015-16 and 2019-20, the age groups with the highest success rates were students under 17 years old (80.7%), and students over 40 years old (79.1%). The lowest success rate was seen in students 18-19 years old (71.2%) and students 20-24 years old (73.2%).

Over this period, the success rate of students 25-39 years old (+4.9%), students 20-24 years old (+4.4%), students over 40 years old (+3.3%), students 18-19 years old (+2.4%), and students under 17 years old (+2.1%) increased.

Course Success Rates by Age: San Bernardino Valley College



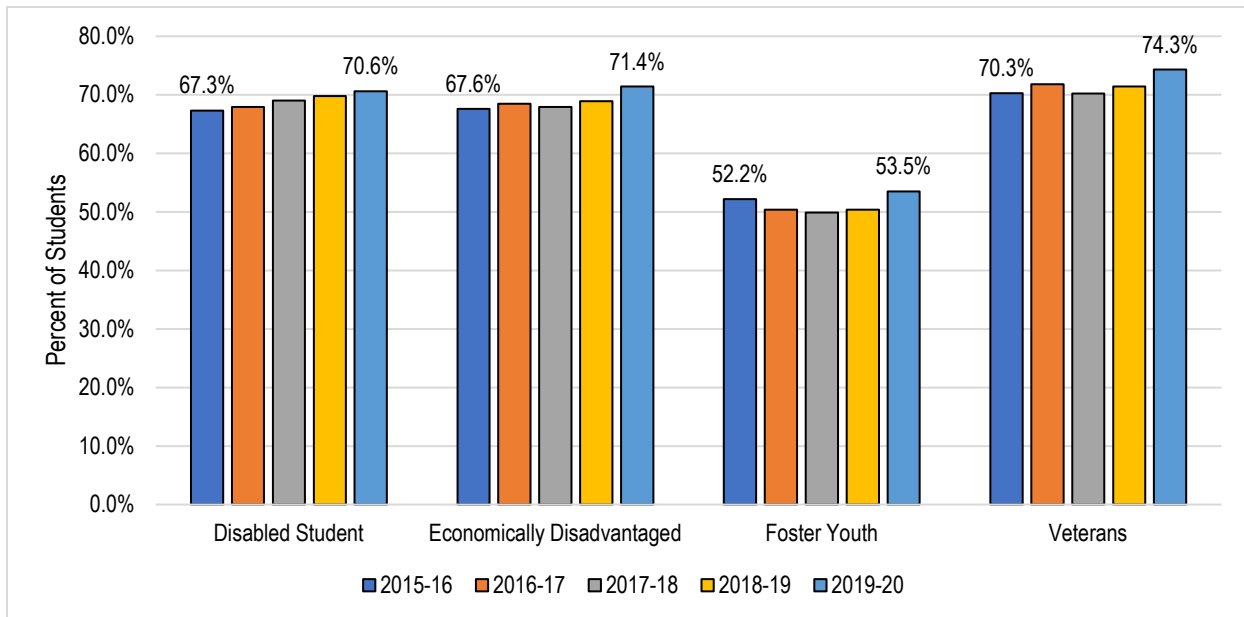
	2015-16	2016-17	2017-18	2018-19	2019-20	5 Year Change	5 Year Average
17 or younger	84.1%	84.3%	81.4%	81.3%	78.4%	-5.7%	81.6%
18-19	64.0%	64.6%	63.5%	64.1%	63.7%	-0.3%	64.0%
20-24	64.1%	65.9%	66.2%	67.7%	70.2%	+6.1%	66.7%
25-39	70.6%	70.6%	69.1%	70.3%	73.4%	+2.8%	70.8%
40 or older	74.1%	73.7%	73.7%	72.1%	75.7%	+1.6%	73.8%
Total Average	67.3%	68.3%	67.6%	68.5%	70.2%	+2.9%	68.4%

Source: CCCC MIS Referential Data Files.

On average, between 2015-16 and 2019-20, the age groups with the highest success rates were students under 17 years old (81.6%), and students over 40 years old (73.8%). The lowest success rate was seen in students 18-19 years old (64.0%) and students 20-24 years old (66.7%).

Over this period, the success rate of students 20-24 years old (+6.1%), and students 25-39 years old (+2.8%), and students over 40 years old (+1.6%) increased, while the success rates of students under 17 years old (-5.7%) and students 18-19 years (-0.3%) declined.

Course Success Rates by Special Population: SBCCD

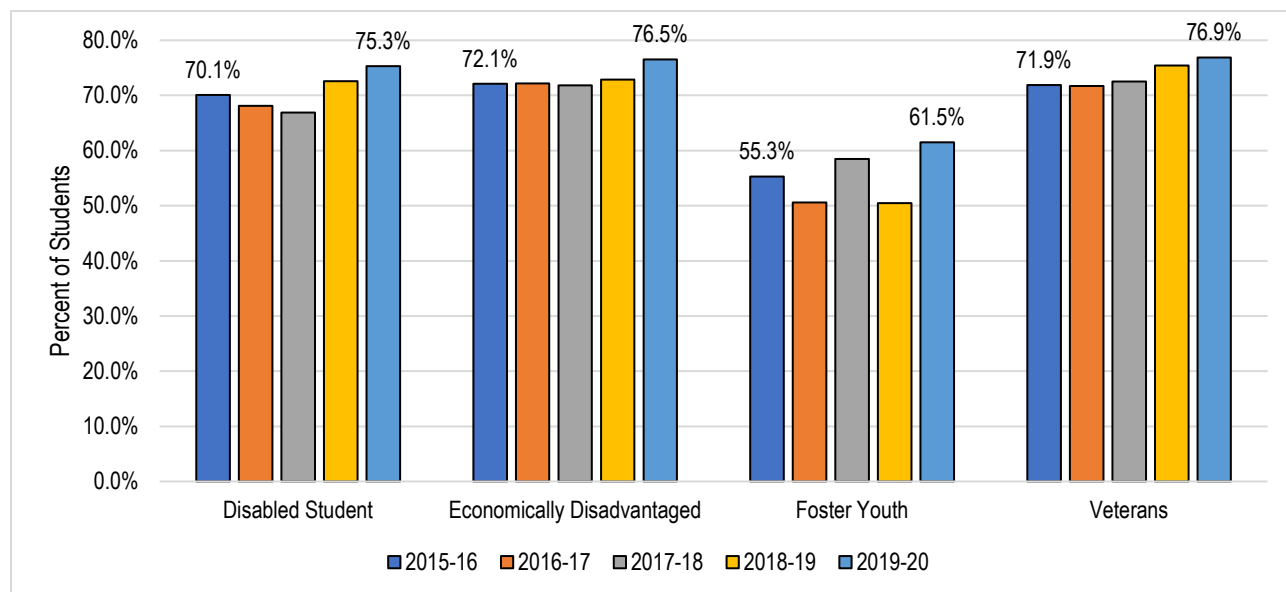


	2015-16	2016-17	2017-18	2018-19	2019-20	5 Year Change	5 Year Average
Disabled Student	67.3%	67.9%	69.0%	69.8%	70.6%	+3.3%	68.8%
Economically Disadvantaged	67.6%	68.5%	67.9%	68.9%	71.4%	+3.8%	68.8%
Foster Youth	52.2%	50.4%	49.9%	50.4%	53.5%	+1.3%	51.3%
Veterans	70.3%	71.8%	70.2%	71.4%	74.3%	+4.0%	71.6%
Total Average	69.2%	69.7%	69.1%	70.3%	72.5%	+3.3%	70.2%

Source: CCCC MIS Referential Data Files.

On average, between 2015-16 and 2019-20, veteran students had the highest success rate (71.6%). The average success rates of foster youth students (51.3%), economically disadvantaged students (68.8%), and students with disabilities (68.8%) were lower than the average success rate for SBCCD (70.2%).

Course Success Rates by Special Population: Crafton Hills College

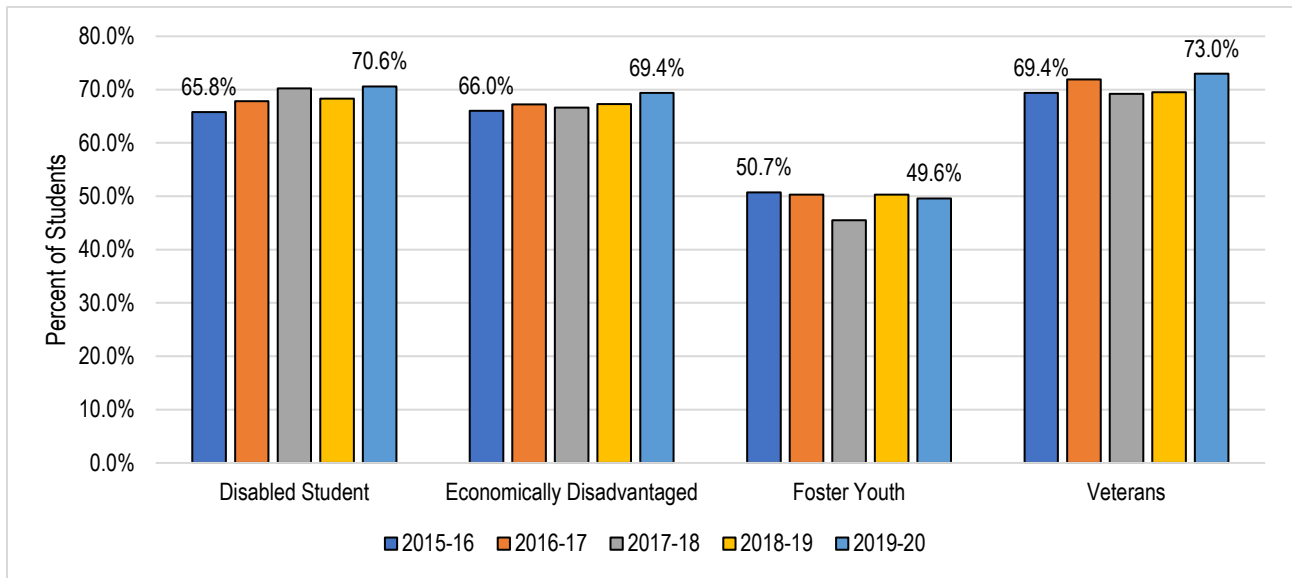


	2015-16	2016-17	2017-18	2018-19	2019-20	5 Year Change	5 Year Average
Disabled Student	70.1%	68.1%	66.9%	72.6%	75.3%	+3.2%	70.7%
Economically Disadvantaged	72.1%	72.2%	71.8%	72.9%	76.5%	+4.4%	73.1%
Foster Youth	55.3%	50.6%	58.5%	50.5%	61.5%	+6.2%	55.5%
Veterans	71.9%	71.7%	72.5%	75.4%	76.9%	+5.0%	73.6%
Total Average	73.2%	72.8%	72.4%	73.9%	77.2%	+4.0%	73.9%

Source: CCCC MIS Referential Data Files.

On average, between 2015-16 and 2019-20, veteran students had the highest success rate (73.6%). The average success rates of foster youth students (55.5%), students with disabilities (70.7%), and economically disadvantaged students (73.1%) were lower than the average overall success rate for Crafton Hills College (73.9%).

Course Success Rates by Special Population: San Bernardino Valley College



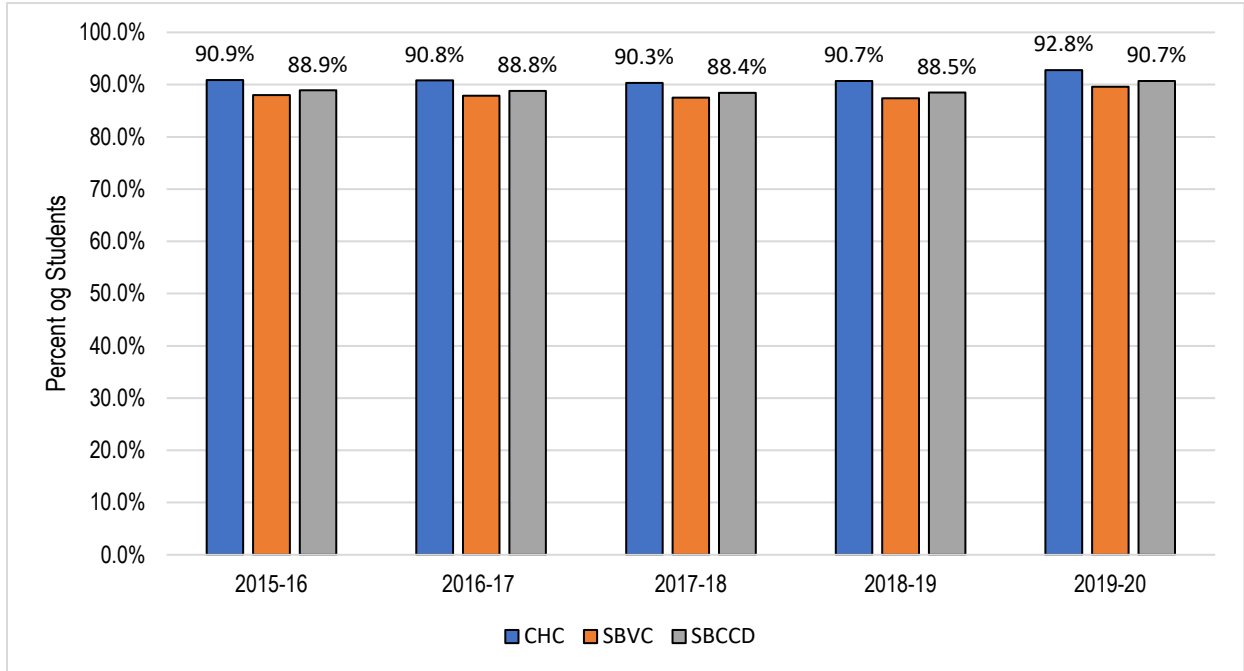
	2015-16	2016-17	2017-18	2018-19	2019-20	5 Year Change	5 Year Average
Disabled Student	65.8%	67.8%	70.2%	68.3%	70.6%	+4.8%	68.5%
Economically Disadvantaged	66.0%	67.2%	66.6%	67.3%	69.4%	+3.4%	67.3%
Foster Youth	50.7%	50.3%	45.5%	50.3%	49.6%	-1.1%	49.3%
Veterans	69.4%	71.9%	69.2%	69.5%	73.0%	+3.6%	70.6%
Total Average	67.3%	68.3%	67.6%	68.5%	70.2%	+2.9%	68.4%

Source: CCCC MIS Referential Data Files.

On average, between 2015-16 and 2019-20, veteran students had the highest success rate (70.6%). The average success rates of foster youth students (49.3%), economically disadvantaged students (67.3%), and students with disabilities (68.5%) were lower than the average overall success rate for San Bernardino Valley College (67.5%).

Over this period, the success rate of the foster youth students declined by 1.1% (50.7% in 2015-16, 49.6% in 2019-20).

Course Retention Rates



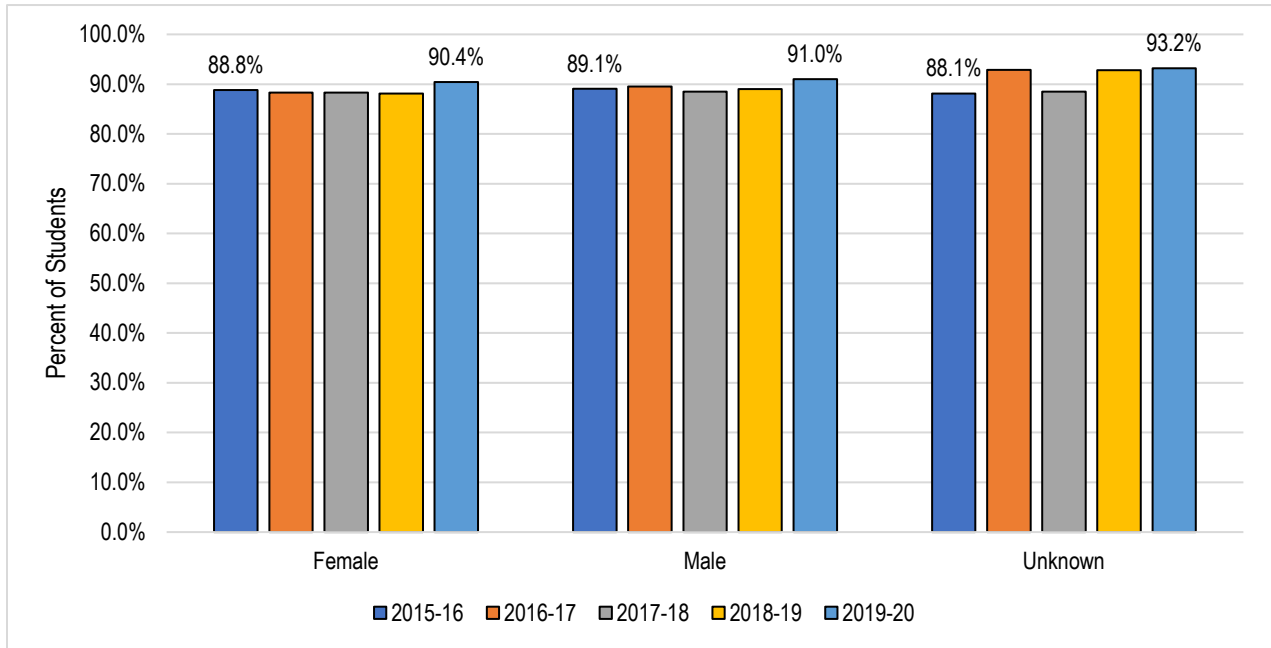
	2015-16	2016-17	2017-18	2018-19	2019-20	5 Year Change	5 Year Average
Crafton Hills College	90.9%	90.8%	90.3%	90.7%	92.8%	+1.9%	91.1%
San Bernardino Valley College	88.0%	87.9%	87.5%	87.4%	89.6%	+1.6%	88.1%
SBCCD (Total)	88.9%	88.8%	88.4%	88.5%	90.7%	+1.8%	89.1%

Source: CCCC MIS Referential Data Files.

Retention Rate = (A, B, C, D, F, I*, IPP, P, NP, and FW Grades / A, B, C, D, F, FW, I*, IPP, P, NP, FW, and W Grades) * 100

The annual course retention rate of students from both colleges in the District increased by 1.8 percentage points, from 88.9% in 2015-16 to 90.7% in 2019-20, with a five-year average of 89.1%.

Course Retention Rates by Gender: SBCCD

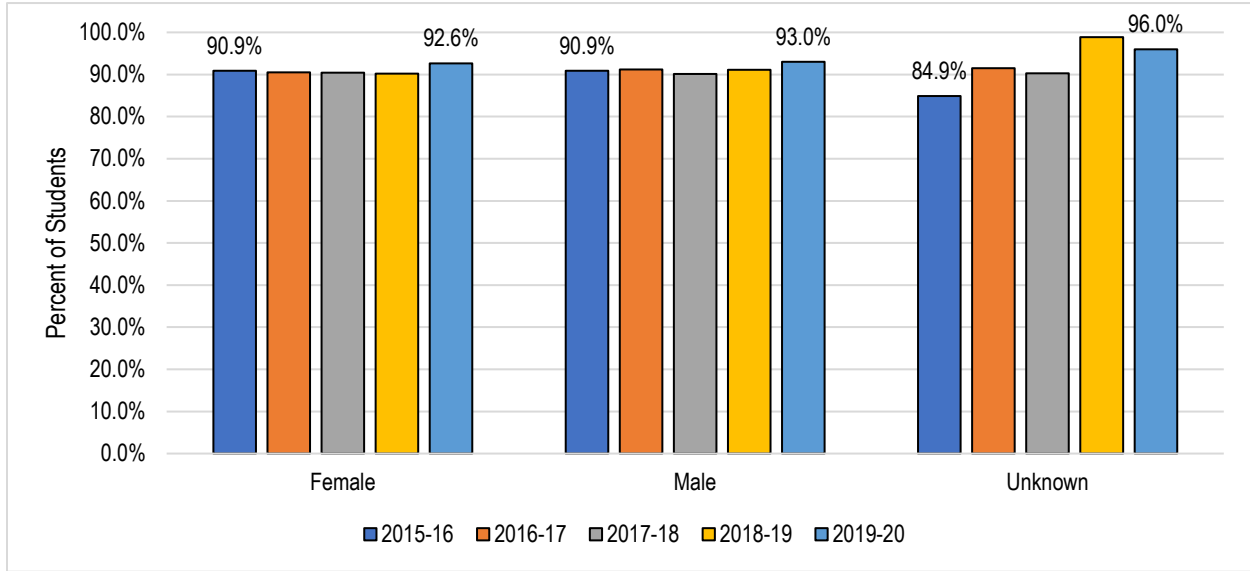


	2015-16	2016-17	2017-18	2018-19	2019-20	5 Year Change	5 Year Average
Female	88.8%	88.3%	88.3%	88.1%	90.4%	+1.6%	88.8%
Male	89.1%	89.5%	88.5%	89.0%	91.0%	+1.9%	89.4%
Unknown	88.1%	92.9%	88.5%	92.8%	93.2%	+5.1%	91.2%
Total Average	88.9%	88.8%	88.4%	88.5%	90.7%	+1.8%	89.1%

Source: CCCC MIS Referential Data Files.

On average, between 2015-16 and 2019-20, male students had a slightly higher retention rate than female students (89.4% & 88.8%, respectively). Over this period, the retention rates for female and male students increased by 1.6% and 1.9%, respectively.

Course Retention Rates by Gender: Crafton Hills College

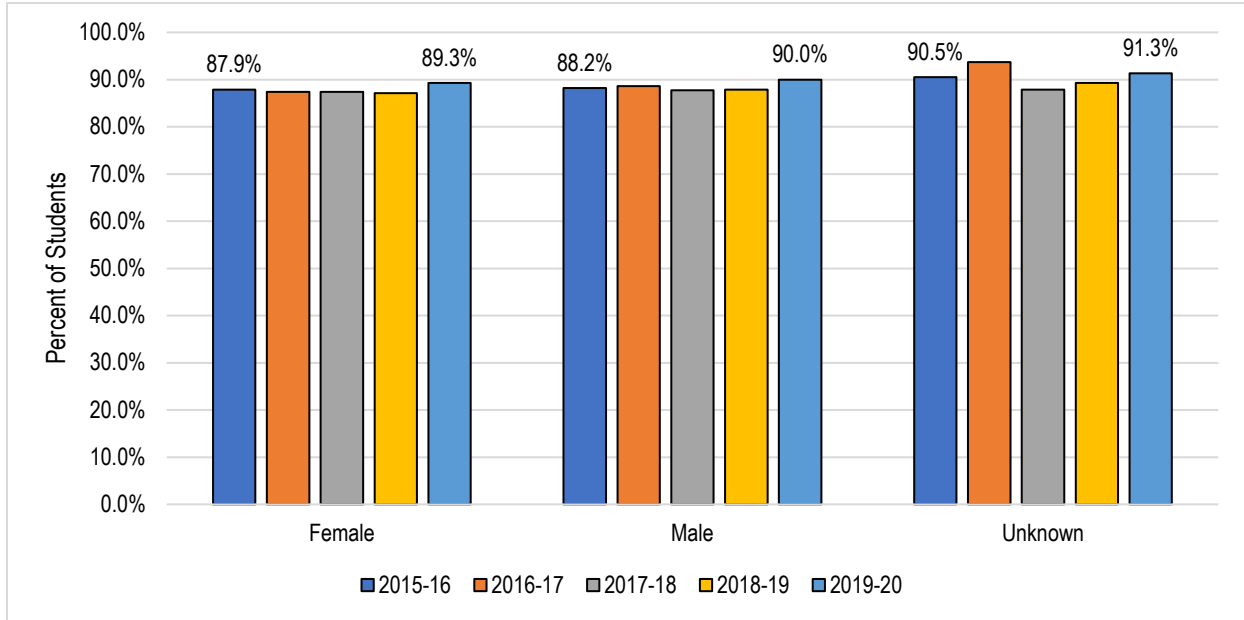


	2015-16	2016-17	2017-18	2018-19	2019-20	5 Year Change	5 Year Average
Female	90.9%	90.5%	90.4%	90.2%	92.6%	+1.7%	91.0%
Male	90.9%	91.2%	90.1%	91.1%	93.0%	+2.1%	91.3%
Unknown	84.9%	91.5%	90.3%	98.9%	96.0%	+11.1%	92.6%
Total Average	90.9%	90.8%	90.3%	90.7%	92.8%	+1.9%	91.1%

Source: CCCC MIS Referential Data Files.

On average, between 2015-16 and 2019-20, female and male students had similar retention rates (91.0% & 90.3%, respectively). Over this period, the retention rates for female and male students increased by 1.7% and 2.1%, respectively.

Course Retention Rates by Gender: San Bernardino Valley College

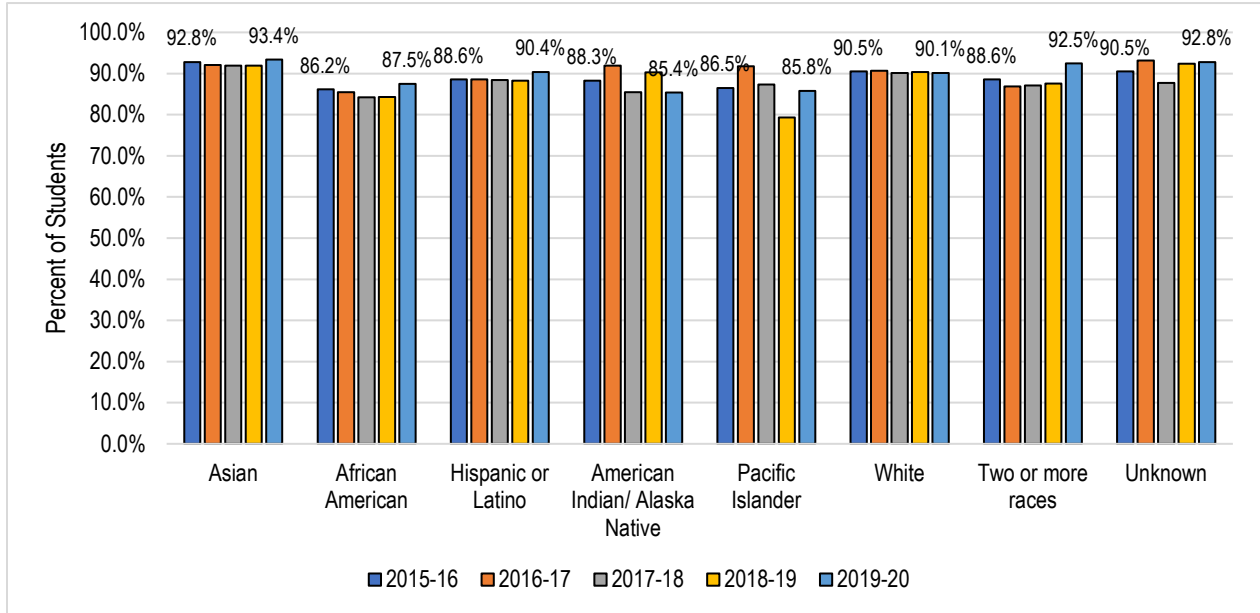


	2015-16	2016-17	2017-18	2018-19	2019-20	5 Year Change	5 Year Average
Female	87.9%	87.4%	87.4%	87.1%	89.3%	+1.4%	87.8%
Male	88.2%	88.6%	87.7%	87.9%	90.0%	+1.8%	88.5%
Unknown	90.5%	93.7%	87.9%	89.3%	91.3%	+0.8%	90.3%
Total Average	88.0%	87.9%	87.5%	87.4%	89.6%	+1.6%	88.1%

Source: CCCC MIS Referential Data Files.

Overall, between 2015-16 and 2019-20, male students had a consistently higher retention rate than female students (88.5% & 87.8%, respectively). Over this period, the retention rates for female and male students increased by 1.4% and 1.8%, respectively.

Course Retention Rates by Race/Ethnicity: SBCCD

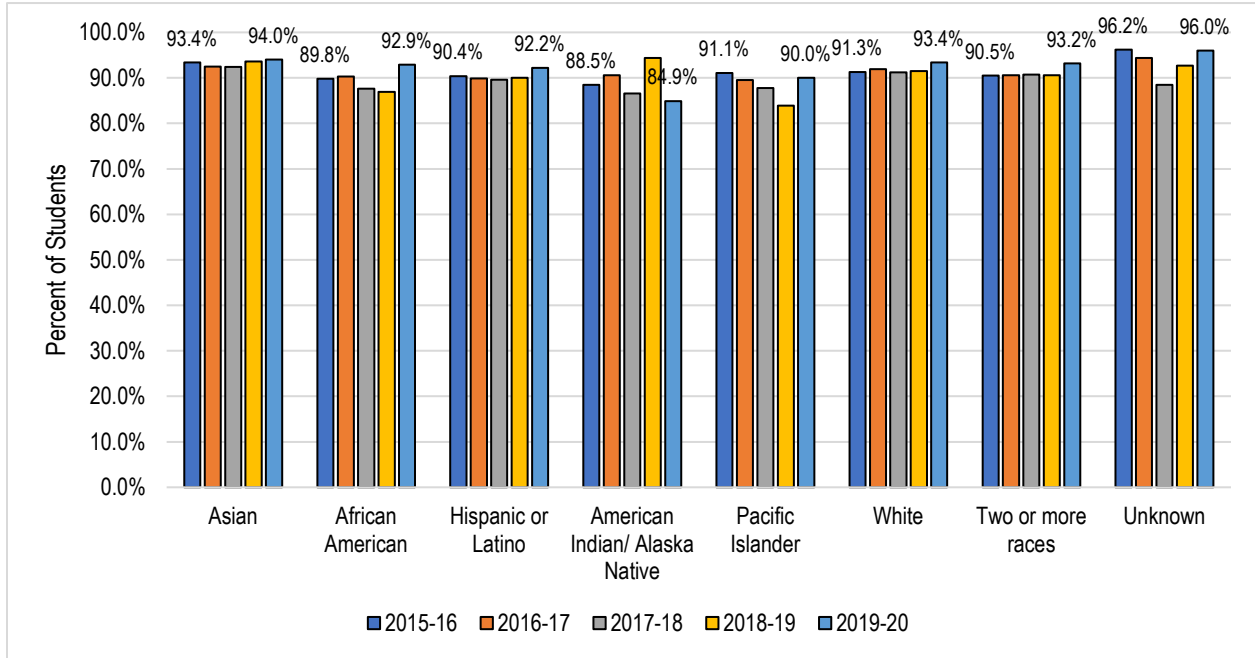


	2015-16	2016-17	2017-18	2018-19	2019-20	5 Year Change	5 Year Average
Asian	92.8%	92.1%	91.9%	91.9%	93.4%	+0.6%	92.4%
African American	86.2%	85.5%	84.2%	84.3%	87.5%	+1.3%	85.5%
Hispanic or Latino	88.6%	88.6%	88.4%	88.3%	90.4%	+1.8%	88.8%
American Indian /Alaska Native	88.3%	91.9%	85.5%	90.3%	85.4%	-2.9%	88.5%
Pacific Islander	86.5%	91.8%	87.3%	79.3%	85.8%	-0.7%	86.3%
White	90.5%	90.7%	90.1%	90.4%	92.5%	+2.0%	90.8%
Two or more races	88.6%	86.9%	87.1%	87.6%	90.1%	+1.5%	88.1%
Unknown	90.5%	93.2%	87.7%	92.4%	92.8%	+2.3%	92.0%
Total Average	88.9%	88.8%	88.4%	88.5%	90.7%	+1.8%	89.1%

Source: CCCC MIS Referential Data Files.

On average, between 2015-16 and 2019-20, Asian students had the highest retention rate (92.4%). The second highest were White students with 90.8%. The lowest were African American students with 85.5%. Over this period, the retention rates of White (+2.0%), Hispanic (+1.8%), Multiracial (+1.5%), African American (+1.3%), and Asian (+0.6%) students increased while the retention rates of American Indian /Alaska Native (-2.9%) and Pacific Islander (-0.7%) students decreased.

Course Retention Rates by Race/Ethnicity: Crafton Hills College



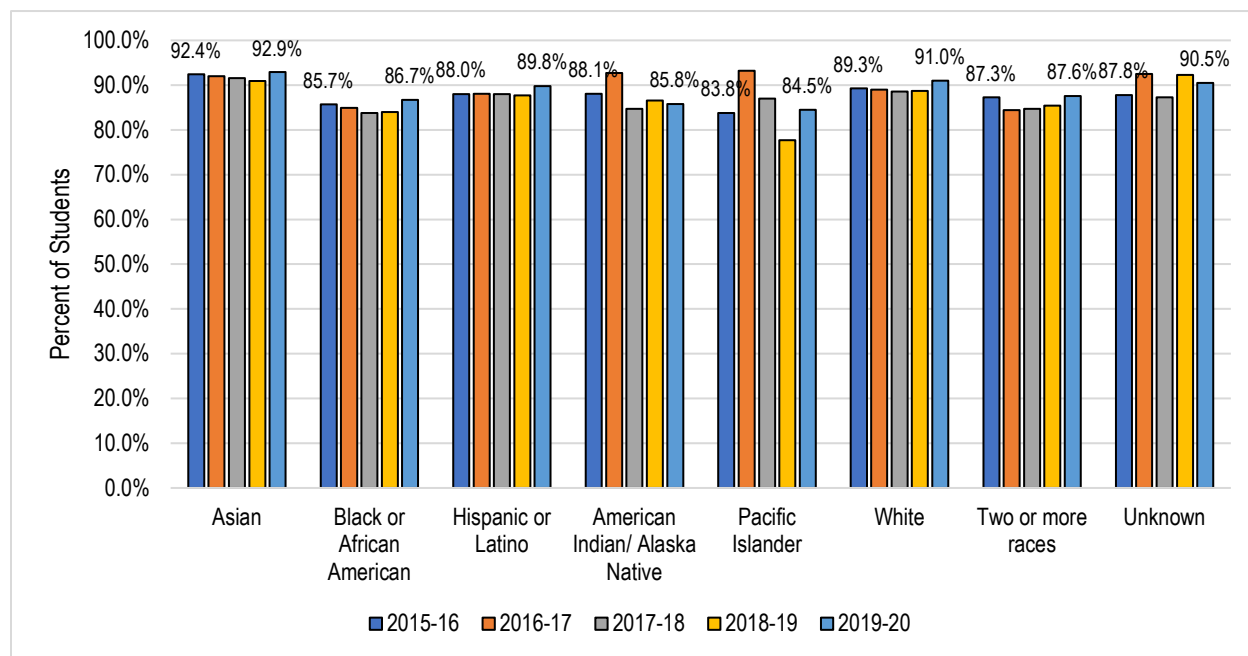
	2015-16	2016-17	2017-18	2018-19	2019-20	5 Year Change	5 Year Average
Asian	93.4%	92.5%	92.4%	93.6%	94.0%	+0.6%	93.2%
African American	89.8%	90.3%	87.6%	86.9%	92.9%	+3.1%	89.5%
Hispanic or Latino	90.4%	89.9%	89.6%	90.0%	92.2%	+1.8%	90.4%
American Indian /Alaska Native	88.5%	90.6%	86.6%	94.4%	84.9%	-3.6%	89.1%
Pacific Islander	91.1%	89.5%	87.8%	83.9%	90.0%	-1.1%	88.7%
White	91.3%	91.9%	91.2%	91.5%	93.4%	+2.1%	91.8%
Two or more races	90.5%	90.6%	90.7%	90.6%	93.2%	+2.7%	91.2%
Unknown	96.2%	94.4%	88.5%	92.7%	96.0%	-0.2%	95.0%
Total Average	90.9%	90.8%	90.3%	90.7%	92.8%	+1.9%	91.1%

Source: CCCC MIS Referential Data Files.

On average, between 2015-16 and 2019-20, Asian students had the highest retention rate (93.2%). The second highest were White students with 91.8%. The lowest were Pacific Islander students with 88.7%.

Over this period, the retention rates of African American (+3.1%), White (+2.7%), Multiracial (+2.1%), Hispanic (+1.8%), and Asian (+0.6%) students increased while the retention rates of American Indian /Alaska Native (-3.6%) and Pacific Islander (-1.1%) students decreased.

Course Retention Rates by Race/Ethnicity: San Bernardino Valley College



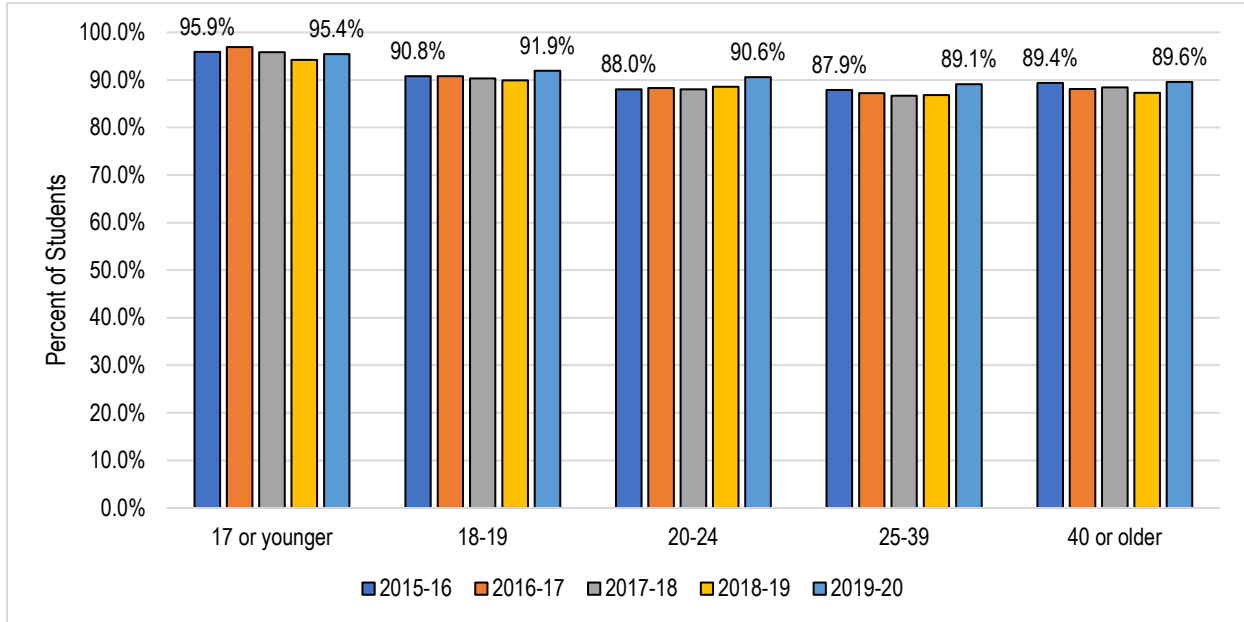
	2015-16	2016-17	2017-18	2018-19	2019-20	5 Year Change	5 Year Average
Asian	92.4%	92.0%	91.6%	90.9%	92.9%	+0.5%	92.0%
African American	85.7%	84.9%	83.8%	84.0%	86.7%	+1.0%	85.0%
Hispanic or Latino	88.0%	88.1%	88.0%	87.7%	89.8%	+1.8%	88.3%
American Indian /Alaska Native	88.1%	92.7%	84.7%	86.6%	85.8%	-2.3%	88.1%
Pacific Islander	83.8%	93.2%	87.0%	77.7%	84.5%	+0.7%	85.1%
White	89.3%	89.0%	88.6%	88.7%	91.0%	+1.7%	89.3%
Two or more races	87.3%	84.4%	84.7%	85.4%	87.6%	+0.3%	85.8%
Unknown	87.8%	92.5%	87.3%	92.3%	90.5%	+2.7%	90.3%
Total Average	88.0%	87.9%	87.5%	87.4%	89.6%	+1.6%	88.1%

Source: CCCC MIS Referential Data Files.

On average, between 2015-16 and 2019-20, Asian students had the highest retention rate (92.0%). The second highest were White students with 89.3%. The lowest were African American students with 85.0%.

Over this period, the retention rates of Hispanic (+1.8%), White (+1.7%), African American (+1.0%), Pacific Islander (+0.7%), Asian (+0.6%), and Multiracial (+0.3%) students increased while the retention rates of American Indian /Alaska Native (-2.3%) students decreased.

Course Retention Rates by Age: SBCCD

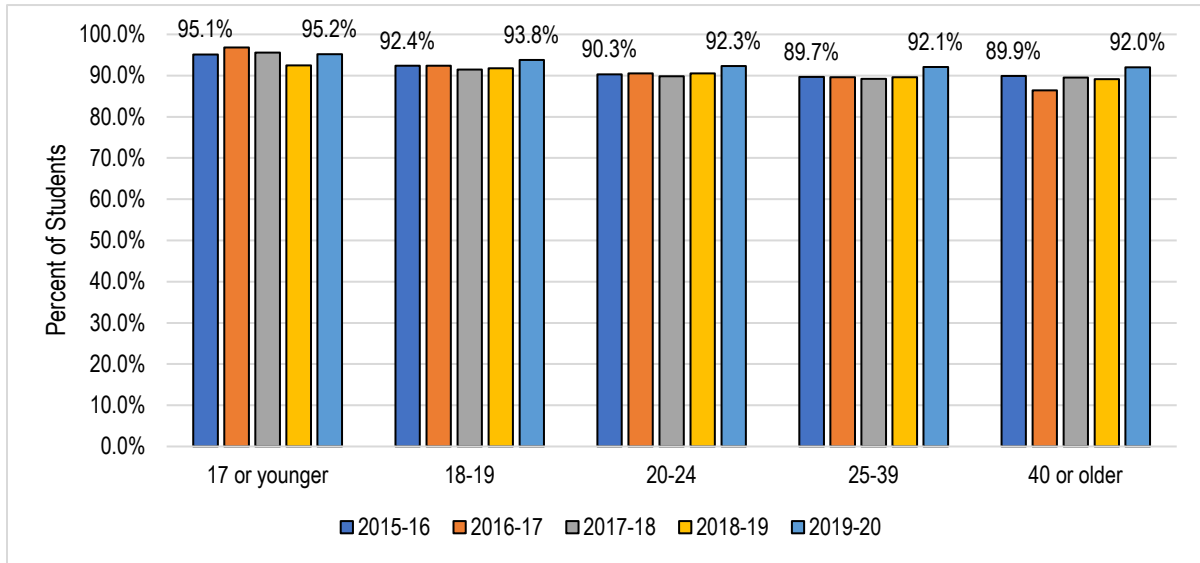


	2015-16	2016-17	2017-18	2018-19	2019-20	5 Year Change	5 Year Average
17 or younger	95.9%	96.9%	95.8%	94.2%	95.4%	-0.5%	95.6%
18-19	90.8%	90.8%	90.3%	89.9%	91.9%	+1.1%	90.8%
20-24	88.0%	88.3%	88.0%	88.6%	90.6%	+2.6%	88.7%
25-39	87.9%	87.2%	86.7%	86.8%	89.1%	+1.2%	87.5%
40 or older	89.4%	88.1%	88.4%	87.3%	89.6%	+0.2%	88.6%
Total Average	88.9%	88.8%	88.4%	88.5%	90.7%	+1.8%	89.1%

Source: CCCC MIS Referential Data Files.

On average, between 2015-16 and 2019-20, students under 17 years old had the highest retention rate (95.6%), while the average retention rates of students 25-39 years old had the lowest retention rate (87.5%).

Course Retention Rates by Age: Crafton Hills College

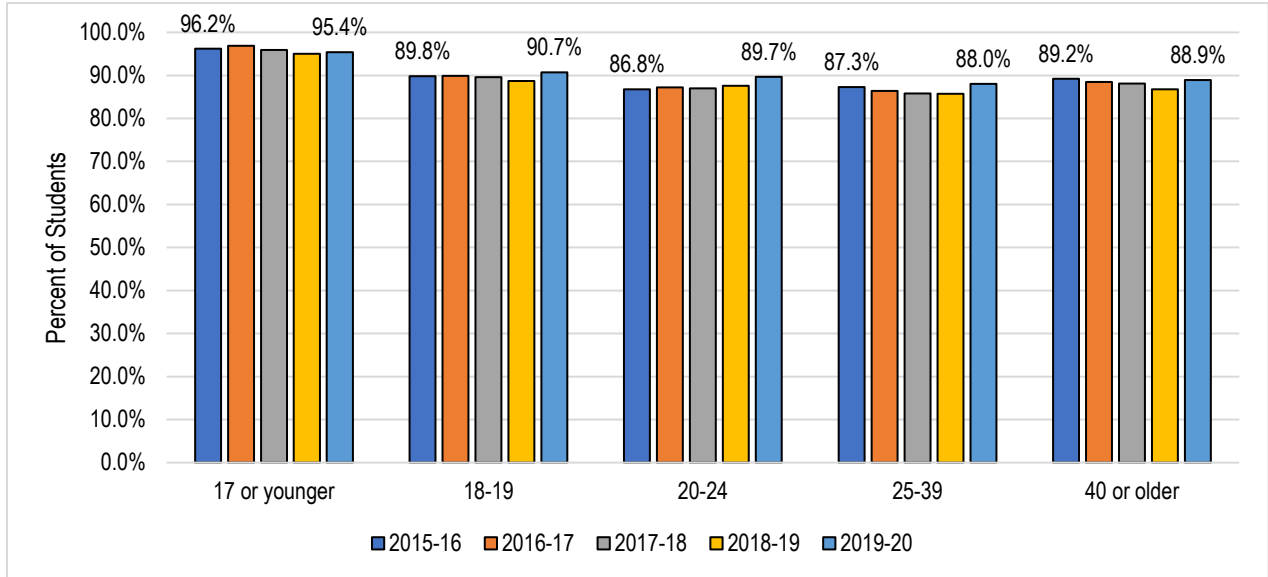


	2015-16	2016-17	2017-18	2018-19	2019-20	5 Year Change	5 Year Average
17 or younger	95.1%	96.8%	95.6%	92.5%	95.2%	+0.1%	94.9%
18-19	92.4%	92.4%	91.5%	91.8%	93.8%	+1.4%	92.4%
20-24	90.3%	90.5%	89.8%	90.5%	92.3%	+2.0%	90.6%
25-39	89.7%	89.6%	89.2%	89.6%	92.1%	+2.4%	90.1%
40 or older	89.9%	86.4%	89.5%	89.1%	92.0%	+2.1%	89.5%
Total Average	90.9%	90.8%	90.3%	90.7%	92.8%	+1.9%	91.1%

Source: CCCC MIS Referential Data Files.

On average, between 2015-16 and 2019-20, students under 17 years old had the highest retention rate (94.9%), while students over 40 years old had the lowest average retention rate (89.5%).

Course Retention Rates by Age: San Bernardino Valley College

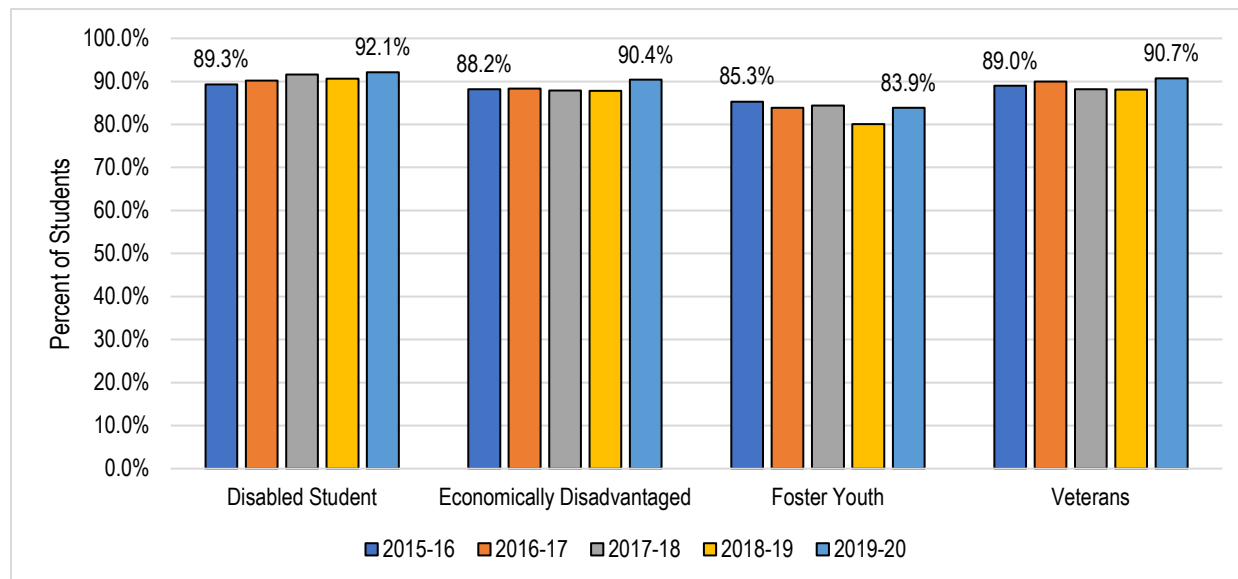


	2015-16	2016-17	2017-18	2018-19	2019-20	5 Year Change	5 Year Average
17 or younger	96.2%	96.9%	95.9%	95.0%	95.4%	-0.8%	95.8%
18-19	89.8%	89.9%	89.6%	88.7%	90.7%	+0.9%	89.8%
20-24	86.8%	87.2%	87.0%	87.6%	89.7%	+2.9%	87.6%
25-39	87.3%	86.4%	85.8%	85.7%	88.0%	+0.7%	86.6%
40 or older	89.2%	88.5%	88.1%	86.8%	88.9%	-0.3%	88.3%
Total Average	88.0%	87.9%	87.5%	87.4%	89.6%	+1.6%	88.1%

Source: CCCC MIS Referential Data Files.

On average, between 2015-16 and 2019-20, students under 17 years old had the highest retention rate (95.8%), while students 25-39 years old had the lowest retention rate (86.6%).

Course Retention Rates by Special Population: SBCCD

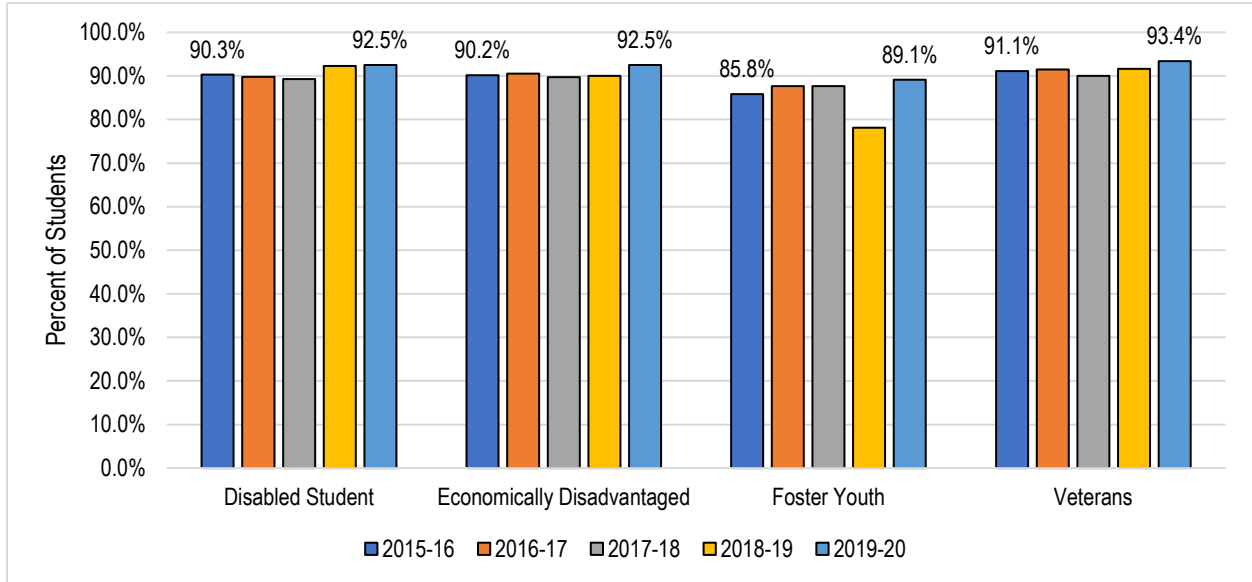


	2015-16	2016-17	2017-18	2018-19	2019-20	5 Year Change	5 Year Average
Disabled Student	89.3%	90.2%	91.6%	90.6%	92.1%	+2.8%	90.7%
Economically Disadvantaged	88.2%	88.3%	87.9%	87.8%	90.4%	+2.2%	88.6%
Foster Youth	85.3%	83.9%	84.4%	80.1%	83.9%	-1.4%	83.6%
Veterans	89.0%	90.0%	88.2%	88.1%	90.7%	+1.7%	89.2%
Total Average	88.9%	88.8%	88.4%	88.5%	90.7%	+1.8%	89.1%

Source: CCCC MIS Referential Data Files.

On average, between 2015-16 and 2019-20, students with disabilities had the highest retention rate (90.7%). The average retention rates of foster youth students (83.6%) and economically disadvantaged students (88.6%) were lower than the average retention rate for SBCCD (89.1%). Over this period, the retention rate of the foster youth students declined by 1.4%.

Course Retention Rates by Special Population: Crafton Hills College

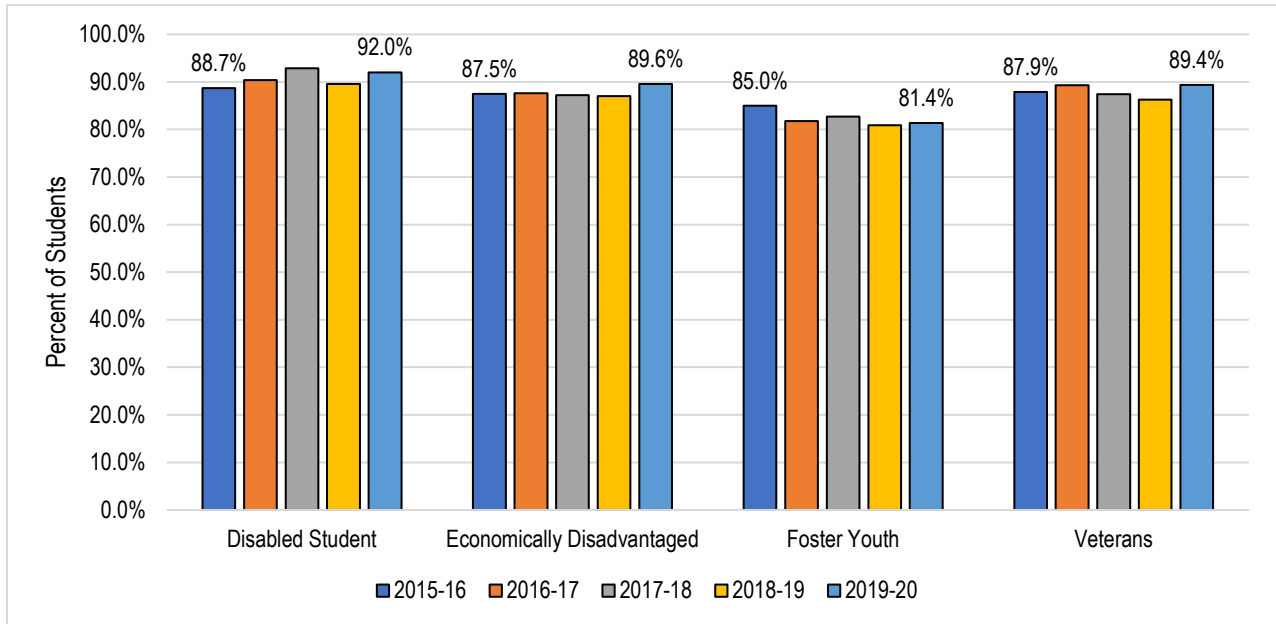


	2015-16	2016-17	2017-18	2018-19	2019-20	5 Year Change	5 Year Average
Disabled Student	90.3%	89.8%	89.3%	92.3%	92.5%	+2.2%	90.9%
Economically Disadvantaged	90.2%	90.5%	89.7%	90.0%	92.5%	+2.3%	90.6%
Foster Youth	85.8%	87.7%	87.7%	78.1%	89.1%	+3.3%	86.1%
Veterans	91.1%	91.5%	90.0%	91.6%	93.4%	+1.4%	91.5%
Total Average	90.9%	90.8%	90.3%	90.7%	92.8%	+1.9%	91.1%

Source: CCCC MIS Referential Data Files.

On average, between 2015-16 and 2019-20, veteran students had the highest retention rate (91.5%). The average retention rates of foster youth students (86.1%), economically disadvantaged students (90.6%), and students with disabilities (90.9%) were lower than the average retention rate for Crafton Hills College (91.1%).

Course Retention Rates by Special Population: San Bernardino Valley College

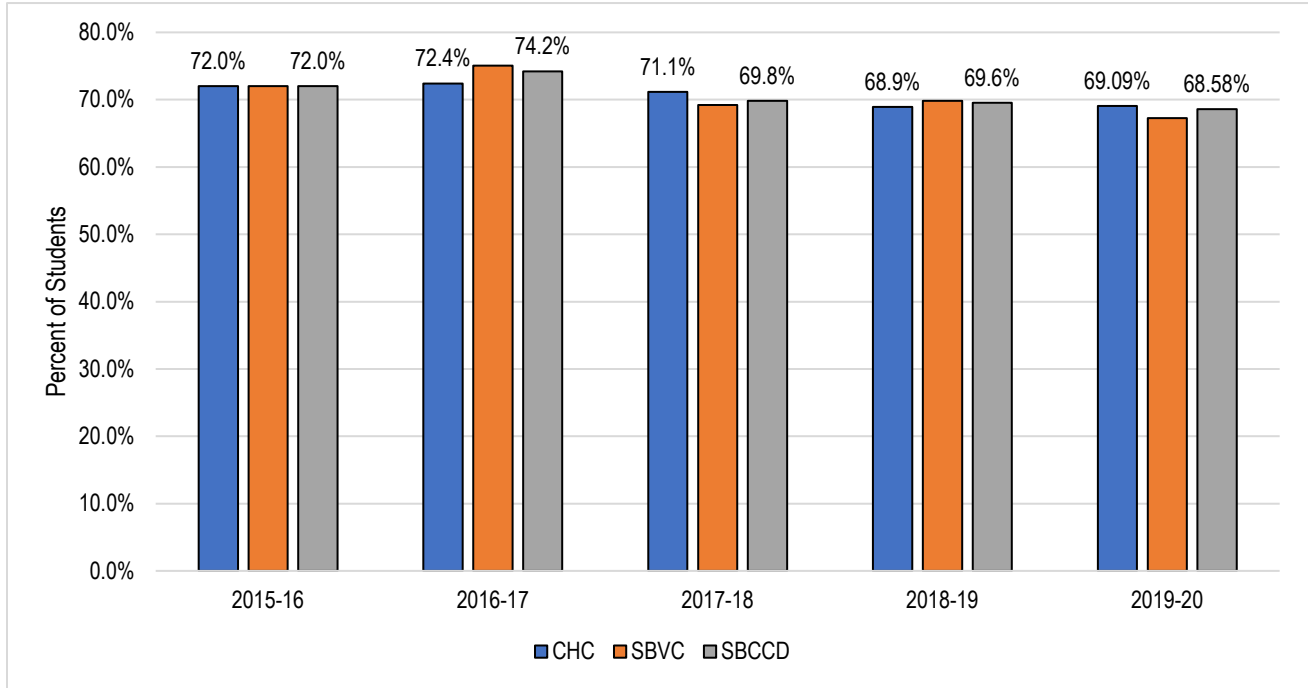


	2015-16	2016-17	2017-18	2018-19	2019-20	5 Year Change	5 Year Average
Disabled Student	88.7%	90.4%	92.9%	89.6%	92.0%	+3.3%	90.5%
Economically Disadvantaged	87.5%	87.6%	87.2%	87.0%	89.6%	+2.1%	87.8%
Foster Youth	85.0%	81.8%	82.7%	80.9%	81.4%	-3.6%	82.4%
Veterans	87.9%	89.3%	87.4%	86.3%	89.4%	+1.5%	88.1%
Total Average	88.0%	87.9%	87.5%	87.4%	89.6%	+1.6%	88.1%

Source: CCCC MIS Referential Data Files.

On average, between 2015-16 and 2019-20, students with disabilities had the highest average retention rate (90.5%). The average retention rates of foster youth students (82.4%) and economically disadvantaged students (87.8%) were lower than the average retention rate for San Bernardino Valley College (88.1%). Over this period, the retention rate of the foster youth students declined by 3.6%.

Persistence Rate: Retained from Fall to Spring



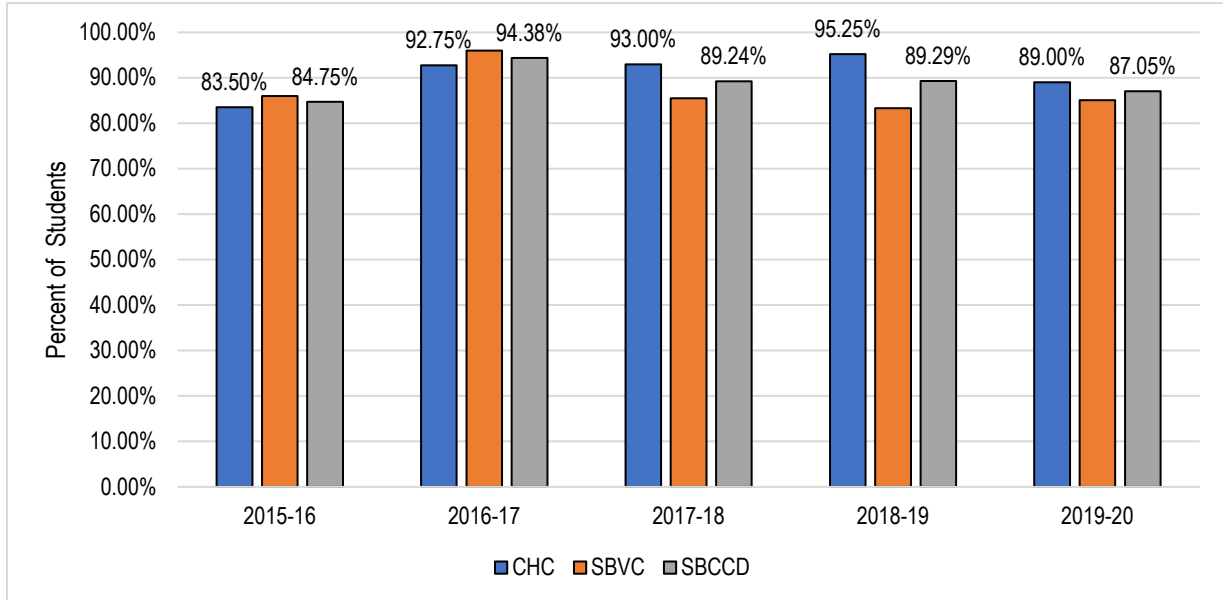
	2015-16	2016-17	2017-18	2018-19	2019-20	5 Year Change
Crafton Hills College	72.00%	72.40%	71.14%	68.94%	69.09%	-2.91%
San Bernardino Valley College	72.02%	75.07%	69.22%	69.84%	67.24%	-4.78%
SBCCD (Total)	72.01%	74.22%	69.81%	69.55%	68.58%	-3.43%

Source: SBCCD KPI Dashboard, KPI I.B

Definition: Number of students earning any grade in the initial Fall semester divided by the number of students who earned any grade in the subsequent Spring semester, excluding students who earned a degree or certificate and/or transferred to a four-year college or university.

The persistence rate of students from both colleges in the District decreased by 3.43 percentage points, from 72.01% in 2015-16 to 68.58% in 2019-20.

Licensure and Certification Pass Rates



	2015-16	2016-17	2017-18	2018-19	2019-20
Crafton Hills College	83.50%	92.75%	93.00%	95.25%	89.00%
San Bernardino Valley College	86.00%	96.00%	85.48%	83.33%	85.09%
SBCCD (Total)	84.75%	94.38%	89.24%	89.29%	87.05%

Source: SBCCD KPI Dashboard, KPI II.5

Between 2015-16 and 2019-20, the average licensure/certification pass rate is 88.94% during this five-year period, with a high of 94.38% in 2016-17 and a low of 84.75% in 2015-16.