



2025 Fact Book

Course Enrollment Trends

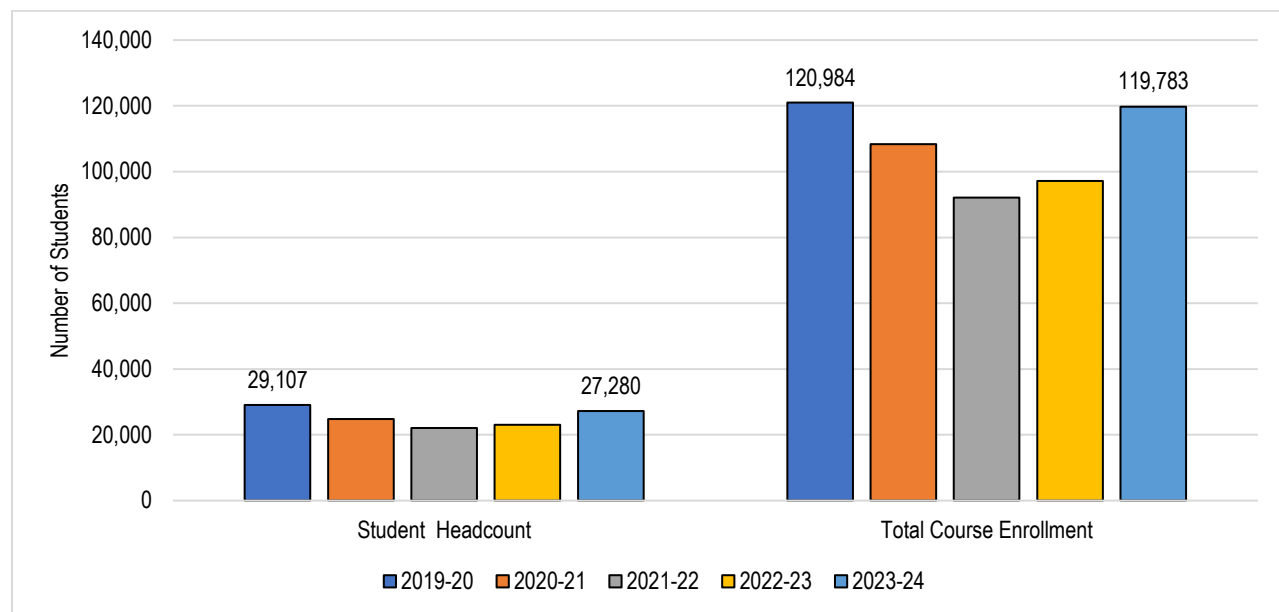
Note that the 2020-2021 Session Instruction Method was impacted by the COVID-19 Pandemic.

Prepared by the SBCCD Office of Research,
Planning and Institutional Effectiveness

Table of Contents

Annual Unduplicated Student Headcount and Total Course Enrollment	2
Course Enrollment (Credit and Non-Credit)	3
Course Enrollment (Distance Education)	4
Course Enrollment (Distance Education) By Terms: 2019-20 Through 2023-24	5
Course Enrollment By Location	6
Full-Time Equivalent Students (FTES): SBCCD	7
Full-Time Equivalent Students (FTES): Crafton Hills College.....	8
Full-Time Equivalent Students (FTES): San Bernardino Valley College	9

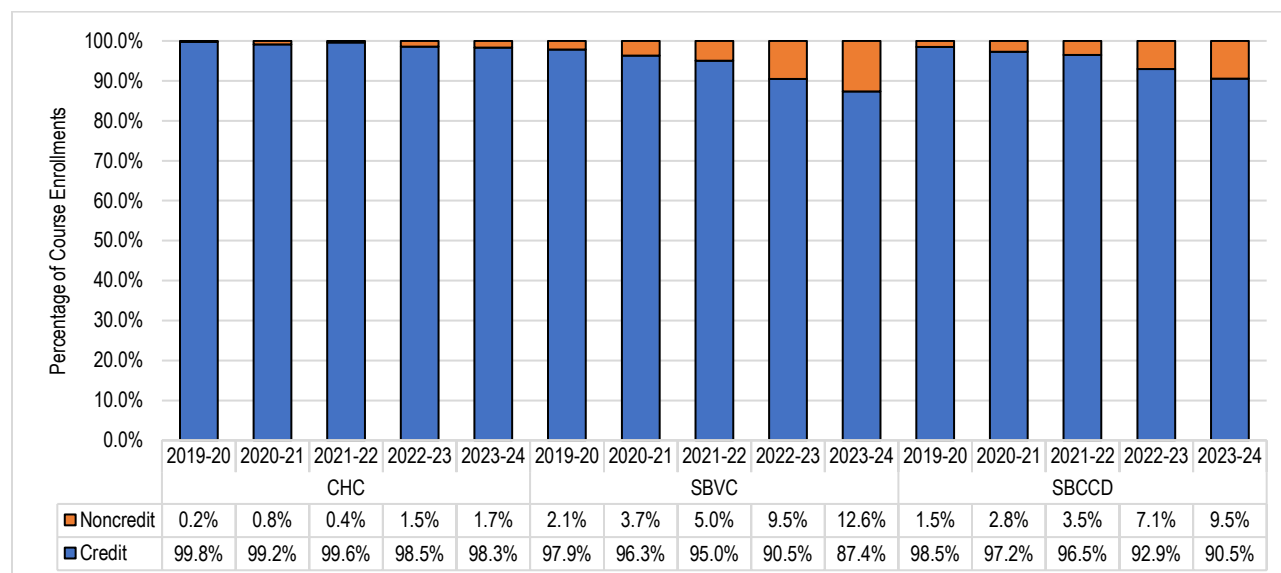
Annual Unduplicated Student Headcount and Total Course Enrollment



		2019-20	2020-21	2021-22	2022-23	2023-24	5 Year Change	5 Year Average
Crafton Hills College	Headcount	9,480	8,461	7,488	7,609	9,386	-1.0%	8,485
	Total Course Enrollment	37,949	35,141	29,164	29,483	34,523	-9.0%	33,252
San Bernardino Valley College	Headcount	20,911	17,642	15,650	16,683	19,997	-4.4%	18,176
	Total Course Enrollment	83,035	73,225	62,928	67,683	85,260	+2.7%	74,426
SBCCD (Total)	Headcount	30,391	26,103	22,029	23,033	27,280	-6.3%	25,245
	Total Course Enrollment	120,984	108,366	92,092	97,166	119,783	-1.0%	107,678

Source: CCCC MIS Referential Data Files

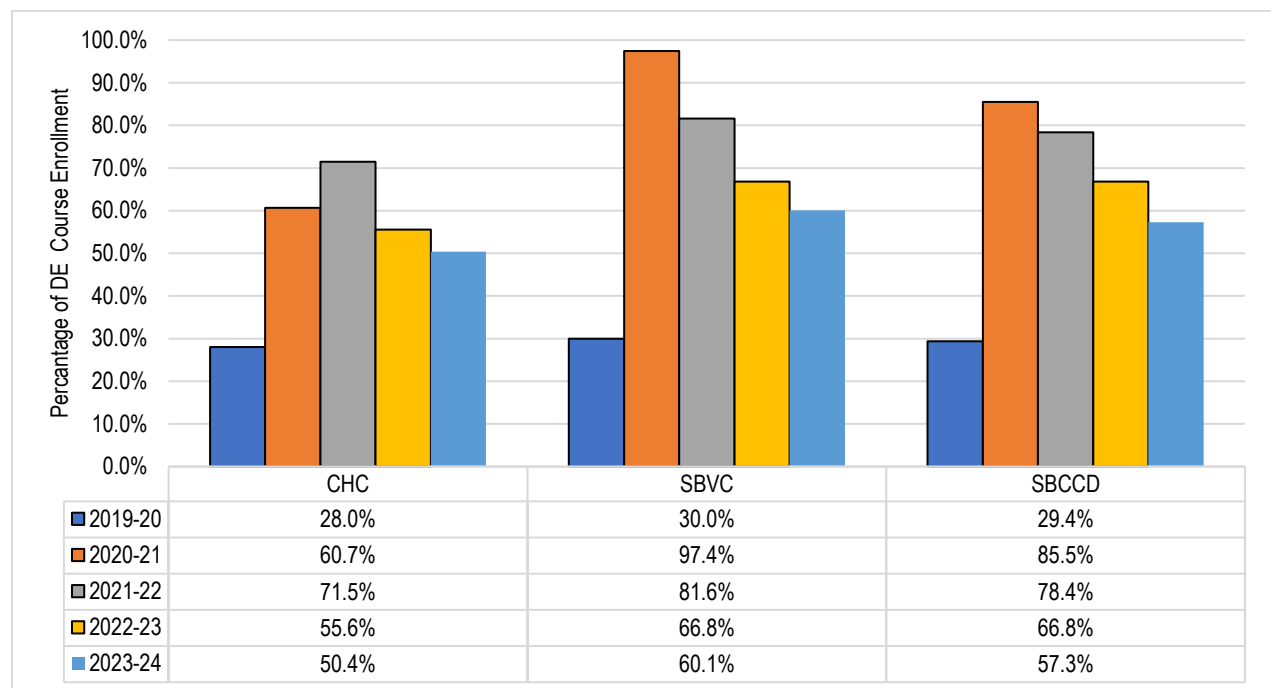
Between 2019-20 and 2023-24, the annual unduplicated student headcount for both colleges in the District decreased by 6.3% from 30,391 to 27,280. Over this period, the number of course enrollments in the District decreased by 1.0% from 120,984 to 119,783. Course enrollments reflect the **total number of classes** that SBCCD students enrolled in during a given term and therefore will be greater than the headcount. That is, students may be enrolled in more than one class and would therefore be duplicated in the course enrollment count.

Course Enrollment (Credit and Non-Credit)

Academic Year	Crafton Hills College			San Bernardino Valley College			SBCCD		
	Credit	Noncredit	Total	Credit	Noncredit	Total	Credit	Noncredit	Total
2019-20	37,876	73	37,949	81,267	1,768	83,035	119,143	1,841	120,984
2020-21	34,843	298	35,141	70,542	2,683	73,225	105,385	2,981	108,366
2021-22	29,048	116	29,164	59,791	3,137	62,928	88,839	3,253	92,092
2022-23	29,055	428	29,483	61,245	6,438	67,683	90,300	6,866	97,166
2023-24	33,950	573	34,523	74,506	10,754	85,260	108,456	11,327	119,783
Grand Total	164,772	1,488	166,260	347,351	24,780	372,131	512,123	26,268	538,391
5 Year Change	-10.4%	+684.9%	-9.0%	-8.3%	+508.3%	+2.7%	-9.0%	+515.3%	-1.0%
5 Year Average	32,954	298	33,252	69,470	4,956	74,426	102,425	5,254	107,678

Source: CCCC MIS Referential Data Files

Between 2019-20 and 2023-24, districtwide course enrollments for credit courses declined 9.0% from 119,143 to 108,456, and course enrollments in non-credit courses increased by 515.3% from 1,841 to 11,327.

Course Enrollment (Distance Education)

Academic Year	Crafton Hills College			San Bernardino Valley College			SBCCD		
	Face to Face	Distance Education*	Total	Face to Face	Distance Education	Total	Face to Face	Distance Education	Total
2019-20	27,310	10,639	37,949	58,127	24,908	83,035	85,437	35,547	120,984
2020-21	13,821**	21,320**	35,141	1,940	71,285	73,225	15,761	92,605	108,366
2021-22	8,315	20,849	29,164	11,549	51,379	62,928	19,864	72,228	92,092
2022-23	13,076	16,407	29,483	22,483	45,200	67,683	35,559	61,607	97,166
2023-24	17,116	17,407	34,523	33,990	51,270	85,260	51,106	68,677	119,783
Grand Total	79,638	86,622	166,260	128,089	244,042	372,131	207,727	330,664	538,391
5 Year Change	-37.3%	+63.6%	-9.0%	-41.5%	+105.8%	+2.7%	-40.2%	+93.2%	-1.0%
5 Year Average	15,928	17,324	33,252	25,618	48,808	74,426	41,545	66,133	107,678

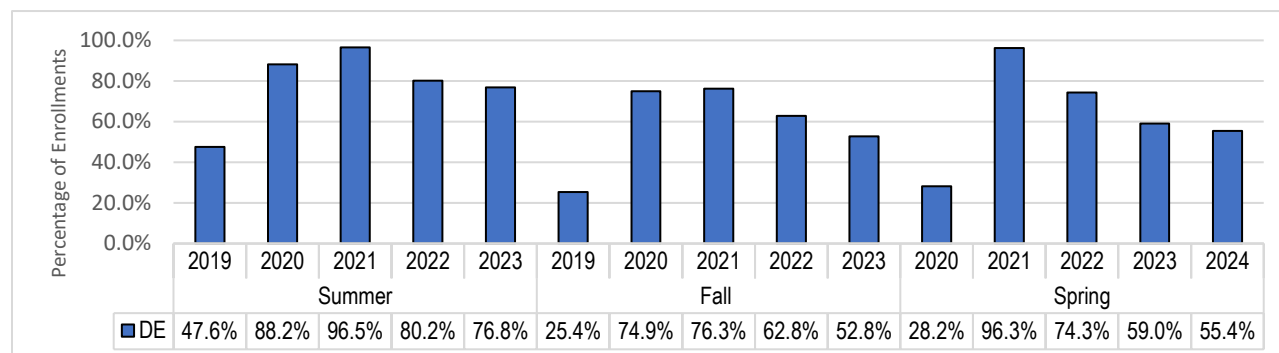
Source: CCCCCO MIS Referential Data Files

*Note: Distance Education modalities at SBCCD include fully online, hybrid, and distance learning classroom courses.

Note that ** means that the 2020-21 Data was impacted by the Covid-19 Pandemic and the course's instructional methods did not update from Face to Face to DE. As such, the accuracy of these numbers is not verifiable.

Between 2019-20 and 2023-24, the percentage of Distance Education course enrollments increased by 27.9% from 29.4% to 57.3%. Over this period, the enrollments for Distance Education courses increased by 93.2% from 35,547 to 68,677 with a five-year average enrollment of 66,133, and the enrollments for face-to-face courses declined by 40.2% from 85,437 to 51,106.

Course Enrollment (Distance Education) By Terms: 2019-20 Through 2023-24



	Crafton Hills College			San Bernardino Valley College			SBCCD		
	Face to Face	DE	Total	Face to Face	DE	Total	Face to Face	DE	Total
2019 Summer	2,274	2,214	4,488	5,829	5,144	10,973	8,103	7,358	15,461
2020 Summer	1,753*	2,692*	4,445	67	10,887	10,954	1,820	13,579	15,399
2021 Summer	116	3,454	3,570	350	9,350	9,700	466	12,804	13,270
2022 Summer	704	2,615	3,319	1,792	7,503	9,295	2,496	10,118	12,614
2023 Summer	1,219	3,316	4,535	2,774	9,910	12,684	3,993	13,226	17,219
Grand Total	6,066	14,291	20,357	10,812	42,794	53,606	16,878	57,085	73,963
5 Year Change	-46.4%	+49.8%	+1.0%	-52.4%	+92.7%	+15.6%	-50.7%	+79.7%	+11.4%

	Crafton Hills College			San Bernardino Valley College			SBCCD		
	Face to Face	DE	Total	Face to Face	DE	Total	Face to Face	DE	Total
2019 Fall	13,881	4,204	18,085	28,315	10,176	38,491	42,196	14,380	56,576
2020 Fall	11,406*	4,803*	16,209	902	31,956	32,858	12,308	36,759	49,067
2021 Fall	4,783	8,800	13,583	5,102	23,065	28,167	9,885	31,865	41,750
2022 Fall	6,369	7,145	13,514	9,651	19,856	29,507	16,020	27,001	43,021
2023 Fall	8,370	6,991	15,361	16,366	20,719	37,085	24,736	27,710	52,446
Grand Total	44,809	31,943	76,752	60,336	105,772	166,108	105,145	137,715	242,860
5 Year Change	-39.7%	+66.3%	-15.1%	-42.2%	+103.6%	-3.7%	-41.4%	92.7%	-7.3%

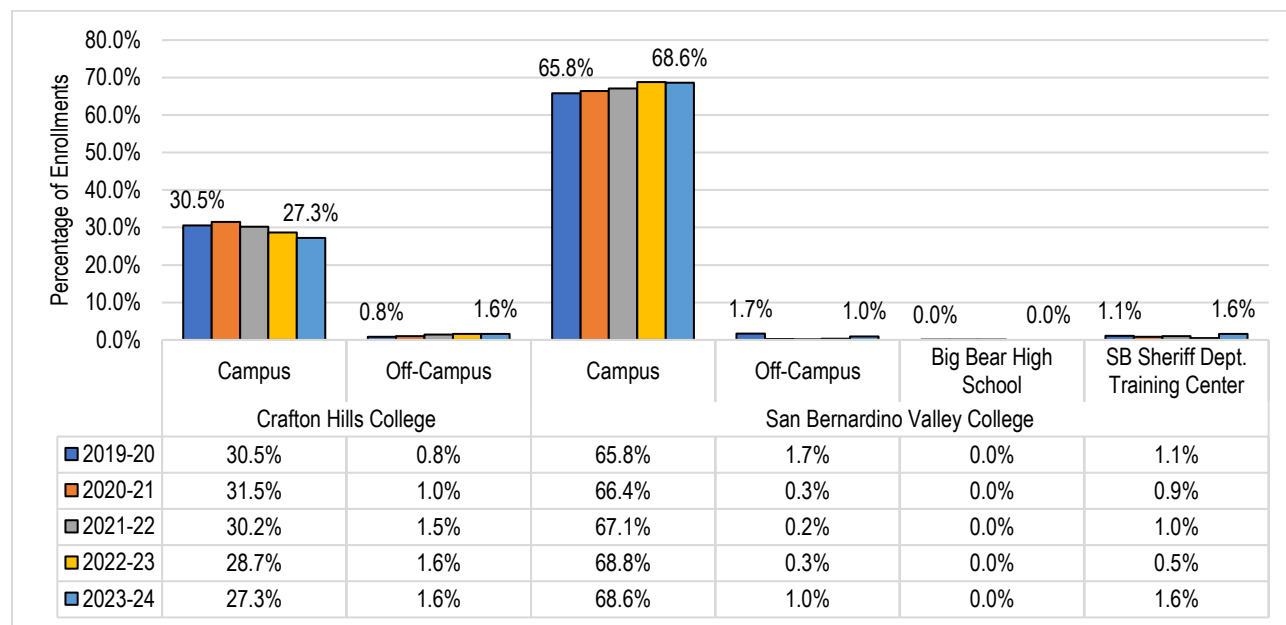
	Crafton Hills College			San Bernardino Valley College			SBCCD		
	Face to Face	DE	Total	Face to Face	DE	Total	Face to Face	DE	Total
2020 Spring	11,155	4,221	15,376	23,983	9,588	33,571	35,138	13,809	48,947
2021 Spring	662	13,825	14,487	971	28,442	29,413	1,633	42,267	43,900
2022 Spring	3,416	8,595	12,011	6,097	18,964	25,061	9,513	27,559	37,072
2023 Spring	6,003	6,647	12,650	11,040	17,841	28,881	17,043	24,488	41,531
2024 Spring	7,527	7,100	14,627	14,850	20,641	35,491	22,377	27,741	50,118
Grand Total	28,763	40,388	69,151	56,941	95,476	152,417	85,704	135,864	221,568
5 Year Change	-32.5%	+68.2%	-4.9%	-38.1%	+115.3%	+5.7%	-36.3%	+100.9%	+2.4%

Source: CCCC MIS Referential Data Files

Note that * means that the 2020-21 Data was impacted by the Covid-19 Pandemic and the course's instructional methods did not update from Face to Face to DE. As such, the accuracy of these numbers is not verifiable.

Between 2019-20 and 2023-24, districtwide Summer course enrollments increased by 11.4% and Spring course enrollments increased by 2.4%, but Fall course enrollments declined by 7.3%. Over this period, the percentage of Distance Education course enrollments increased for Summer (47.6% in 2019-20 to 76.8% in 2023-24), for Fall (25.4% in 2019-20, 52.8% in 2023-24), and for Spring (28.2% in 2019-20, 55.4% in 2023-24).

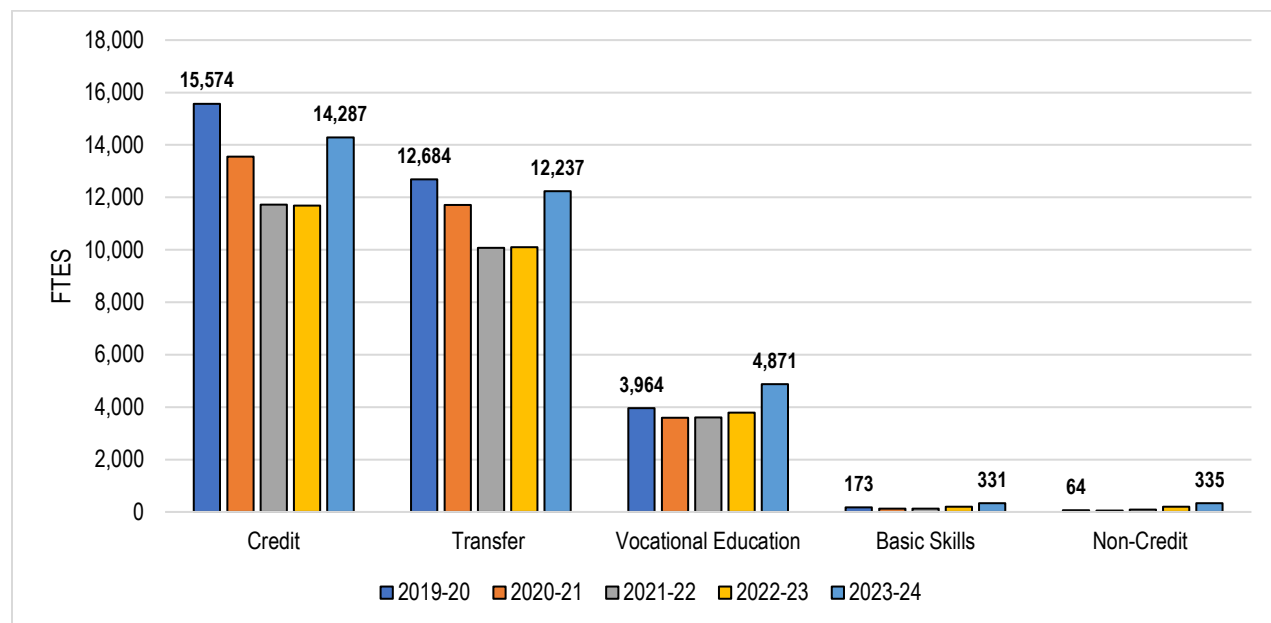
Course Enrollment By Location



		2019-20	2020-21	2021-22	2022-23	2023-24	5 Year Change	5 Year Average
Crafton Hills College	Campus	36,947	34,090	27,810	27,895	32,641	-11.7%	31,877
	Off-Campus	1,002	1,051	1,354	1,588	1,882	+87.8%	1,375
San Bernardino Valley College	Campus	79,596	71,991	61,826	66,872	82,206	+3.3%	72,498
	Off-Campus	2,048	307	164	339	1,138	-44.4%	799
	Big Bear High School	53	3	8	0	0	-100.0%	13
	SB Sheriff Dept. Training Center	1,338	924	930	472	1,916	+43.2%	1,116
Total		120,984	108,366	92,092	97,166	119,783	-1.0%	107,678

Source: CCCC MIS Referential Data Files; SBCCD's Executive Information System

Between 2019-20 and 2023-24, course enrollment increases were observed at the SBVC Campus (+2610, a 3.3% increase), CHC Off-Campus (+880, a 87.8% increase), and SB Sheriff Dept. Training Center(+578, a 43.2% increase). A decrease in course enrollments was observed at CHC Campus (-4306, a 11.7% decline), SBVC Off-Campus (-910, a 44.4% decline), and Big Bear High School (-53, a 100% decline).

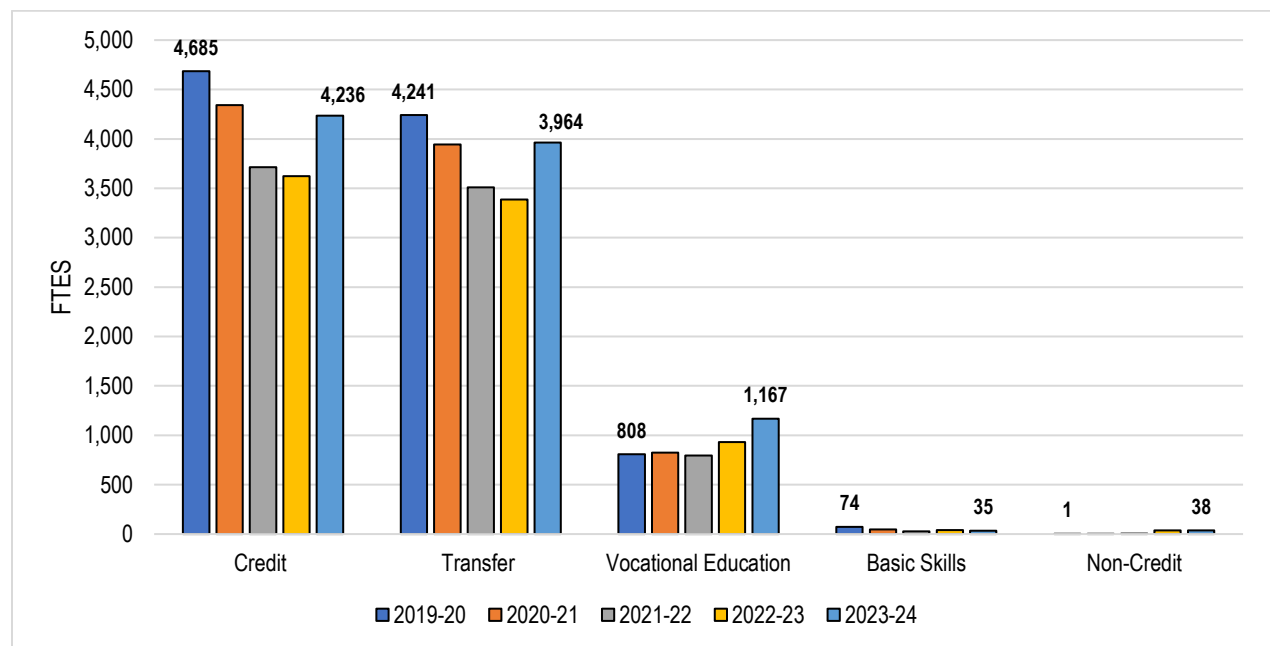
Full-Time Equivalent Students (FTES): SBCCD

FTES	2019-20	2020-21	2021-22	2022-23	2023-24	5 Year Change	5 Year Average
Credit FTES	15,574	13,556	11,721	11,692	14,287	-8.3%	13,366
Transfer	12,684	11,717	10,073	10,097	12,237	-3.5%	11,362
Vocational Education	3,964	3,595	3,611	3,790	4,871	+22.9%	3,966
Basic Skills	173	126	126	202	331	+91.0%	192
Non-Credit FTES	64	57	92	201	335	+419.3%	150
Total FTES	15,638	13,614	11,814	11,893	14,622	-6.5%	13,516

Source: CCCCO Data Mart at the following link: https://datamart.cccco.edu/Students/FTES_Summary.aspx

Note: The FTES value is calculated by summing the "Total Hours" (refer to SXD4 in CCCCO MIS Data Element Dictionary) in all the enrollment records reported to CCCCO MIS during the requested time period, then dividing by 525. If "Total Hours" cannot be derived because data is missing or set to "Unknown/Unreported", the enrollments are not included. All activity in classes eligible for state apportionment funding is included. This methodology is not same as the methodology used in calculating FTES for CCFS-320 report.

Between 2019-20 and 2023-24, the District Credit FTES declined by 8.3% from 15,574 to 14,287, and the Transfer FTES declined by 3.5% from 12,684 to 12,237. However, the Vocational FTES increased by 22.9% from 3,964 to 4,871, the Basic Skills FTES increased by 91.0% from 173 to 331, and the Non-Credit FTES increased by 419.3% from 64 to 335.

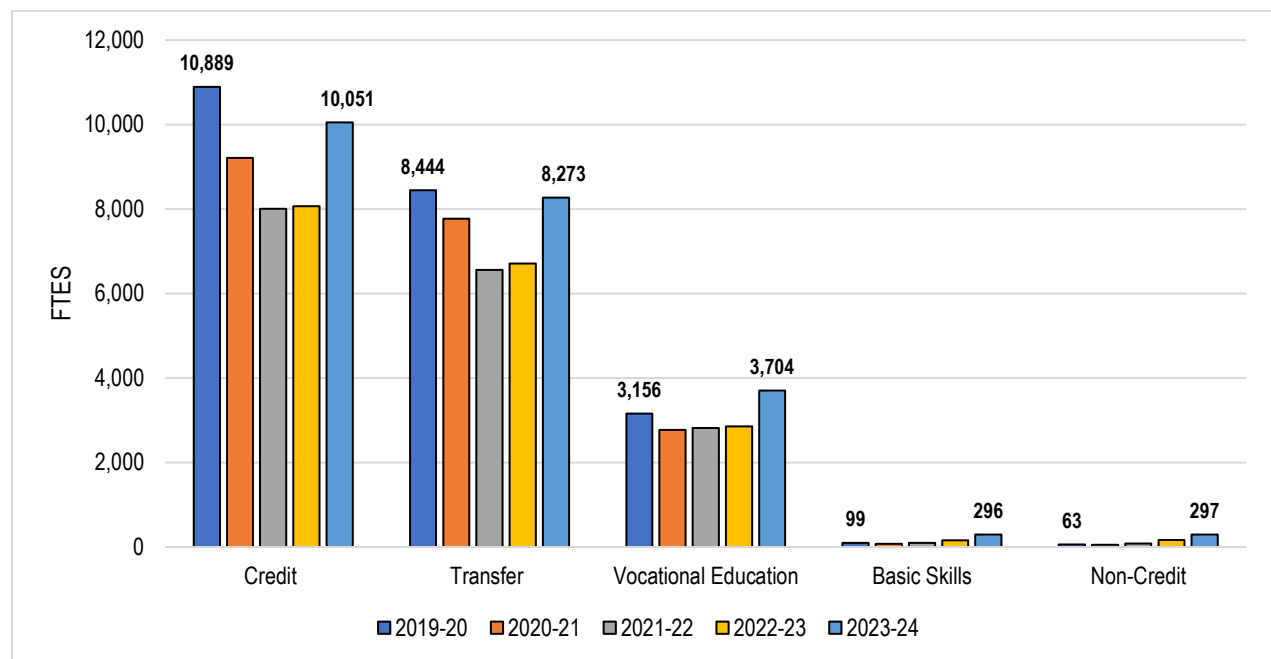
Full-Time Equivalent Students (FTES): Crafton Hills College

FTES	2019-20	2020-21	2021-22	2022-23	2023-24	5 Year Change	5 Year Average
Credit FTES	4,685	4,342	3,712	3,624	4,236	-9.6%	4,120
Transfer	4,241	3,943	3,510	3,385	3,964	-6.5%	3,809
Vocational Education	808	823	794	931	1,167	+44.4%	905
Basic Skills	74	48	28	42	35	-52.9%	45
Non-Credit FTES	1	2	6	38	38	+3,013.5%	17
Total FTES	4,686	4,344	3,718	3,662	4,274	-8.8%	4,137

Source: CCCCO Data Mart at the following link: https://datamart.cccco.edu/Students/FTES_Summary.aspx

Note: The FTES value is calculated by summing the "Total Hours" (refer to SXD4 in CCCCO MIS Data Element Dictionary) in all the enrollment records reported to CCCCO MIS during the requested time period, then dividing by 525. If "Total Hours" cannot be derived because data is missing or set to "Unknown/Unreported", the enrollments are not included. All activity in classes eligible for state apportionment funding is included. This methodology is not same as the methodology used in calculating FTES for CCFS-320 report.

Between 2019-20 and 2023-24, the Credit FTES generated by Crafton Hills College declined by 9.6% from 4,685 to 4,236, the Transfer FTES declined by 6.5% from 4,241 to 3,964, and the Basic Skills FTES declined by 52.9% from 74 to 35. However, the Non-Credit FTES increased by 3,013.5% from 1 to 38, and the Vocational Education FTES increased by 44.4% from 808 to 1,167.

Full-Time Equivalent Students (FTES): San Bernardino Valley College

FTES	2019-20	2020-21	2021-22	2022-23	2023-24	5 Year Change	5 Year Average
Credit FTES	10,889	9,214	8,009	8,068	10,051	-7.7%	9,246
Transfer	8,444	7,774	6,563	6,712	8,273	-2.0%	7,553
Vocational Education	3,156	2,772	2,817	2,859	3,704	+17.4%	3,062
Basic Skills	99	78	98	160	296	+199.0%	146
Non-Credit FTES	63	56	86	163	297	+369.0%	133
Total FTES	10,952	9,270	8,095	8,231	10,348	-5.5%	9,379

Source: CCCC Data Mart at the following link: https://datamart.cccco.edu/Students/FTES_Summary.aspx

Note: The FTES value is calculated by summing the "Total Hours" (refer to SXD4 in CCCC MIS Data Element Dictionary) in all the enrollment records reported to CCCC MIS during the requested time period, then dividing by 525. If "Total Hours" cannot be derived because data is missing or set to "Unknown/Unreported", the enrollments are not included. All activity in classes eligible for state apportionment funding is included. This methodology is not same as the methodology used in calculating FTES for CCFS-320 report.

Between 2019-20 and 2023-24, the Credit FTES generated by San Bernardino Valley College declined by 7.7% from 10,889 to 10,051 and the Transfer FTES declined by 2.0% from 8,444 to 8,273. However, the Vocational Education FTES increased by 17.4% from 3,156 to 3,704, the Basic Skills FTES increased by 199.0% from 99 to 296, and the Non-Credit FTES increased by 369.0% from 63 to 297.