



# **2023 Fact Book**

## **Course Enrollment Trends**

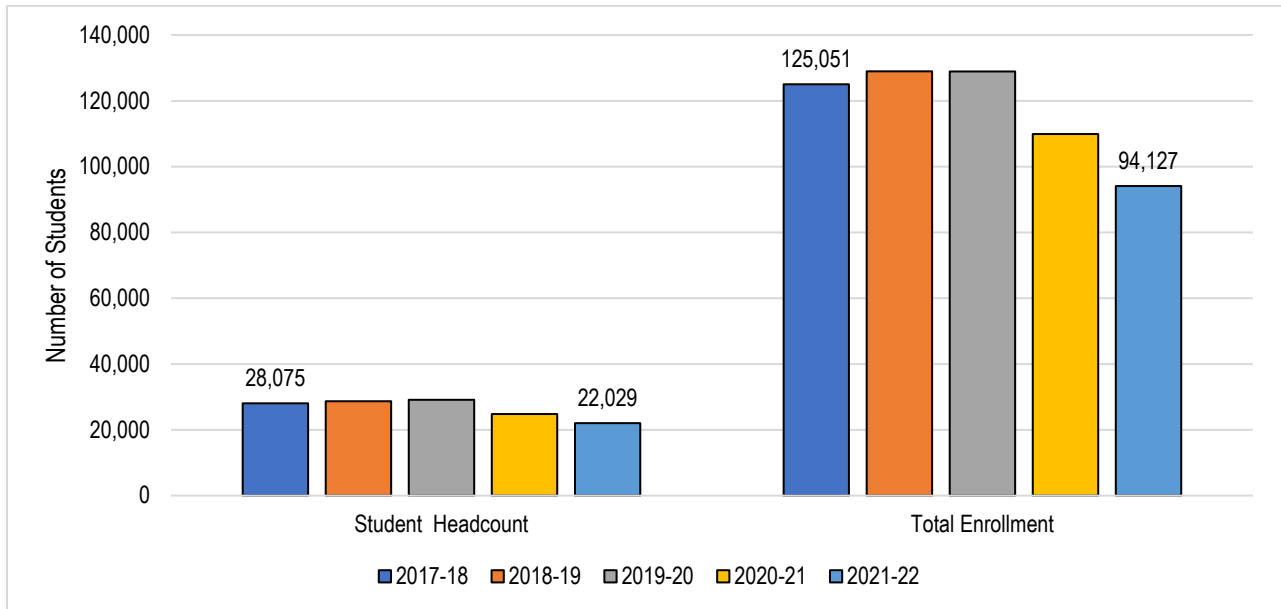
Note that the 2020-2021 Session Instruction Method was impacted by the COVID-19 Pandemic.

Prepared by the SBCCD Office of Research,  
Planning and Institutional Effectiveness

## Table of Contents

<b>Annual Unduplicated Student Headcount and Total Enrollment.....</b>	<b>2</b>
<b>Course Enrollment (Credit and Non-Credit) .....</b>	<b>3</b>
<b>Course Enrollment (Distance Education) .....</b>	<b>4</b>
<b>Course Enrollment (Distance Education) By Terms: 2017-18 Through 2021-22 .....</b>	<b>5</b>
<b>Course Enrollment By Location .....</b>	<b>6</b>
<b>Full-Time Equivalent Students (FTES): SBCCD .....</b>	<b>7</b>
<b>Full-Time Equivalent Students (FTES): Crafton Hills College.....</b>	<b>8</b>
<b>Full-Time Equivalent Students (FTES): San Bernardino Valley College .....</b>	<b>9</b>

### Annual Unduplicated Student Headcount and Total Enrollment

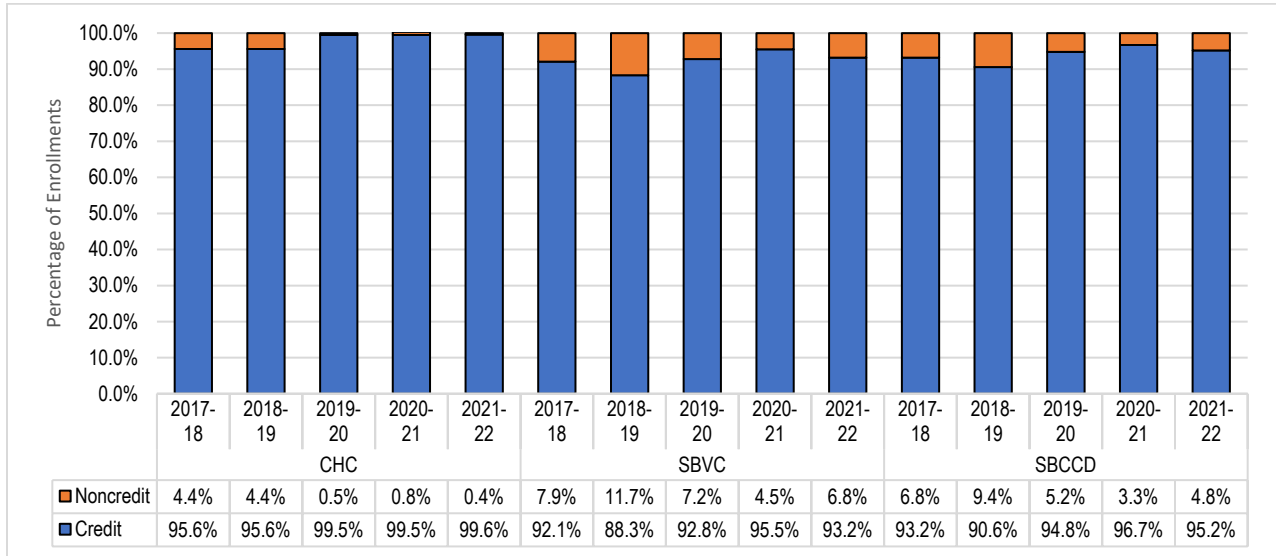


		2017-18	2018-19	2019-20	2020-21	2021-22	5 Year Change	5 Year Average
Crafton Hills College	Headcount	8,865	9,485	9,480	8,461	7,488	-15.5%	8,756
	Total Enrollment	37,944	40,126	39,609	35,628	29,392	-22.5%	36,540
San Bernardino Valley College	Headcount	20,286	20,388	20,911	17,642	15,650	-22.9%	18,975
	Total Enrollment	87,107	88,878	89,330	74,296	64,735	-25.7%	80,869
SBCCD (Total)	Headcount	29,151	29,873	30,391	26,103	22,029	-24.4%	27,509
	Total Enrollment	125,051	129,004	128,939	109,924	94,127	-24.7%	117,409

Source: CCCC MIS Referential Data Files

Between 2017-18 and 2021-22, the annual unduplicated student headcount for both colleges in the District declined by 24.4% from 29,151 to 22,029. Over this period, the number of course enrollments in the District declined by 24.7% from 125,051 to 94,127. Course enrollments reflect the **total number of classes** that SBCCD students enrolled in during a given term and therefore will be greater than the headcount. That is, students may be enrolled in more than one class and would therefore be duplicated in the course enrollment count.

**Course Enrollment (Credit and Non-Credit)**

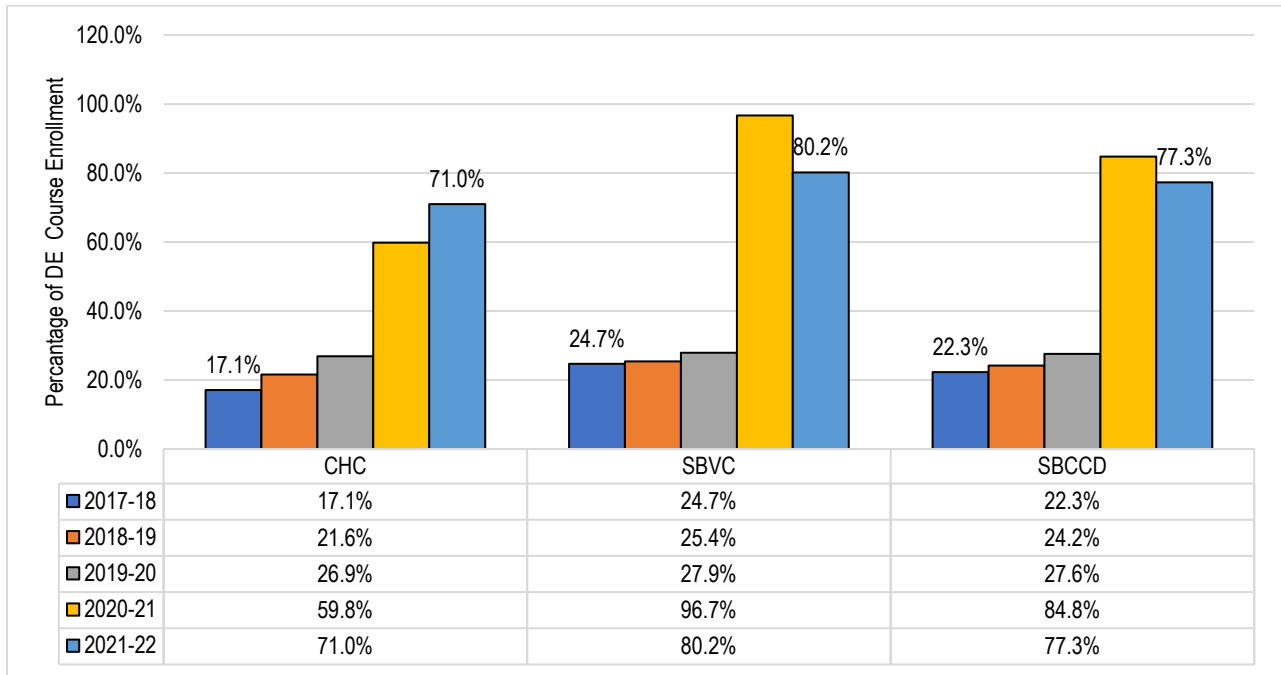


Academic Year	Crafton Hills College			San Bernardino Valley College			SBCCD		
	Credit	Noncredit	Total	Credit	Noncredit	Total	Credit	Noncredit	Total
2017-18	36,284	1,660	37,944	80,257	6,850	87,107	116,541	8,510	125,051
2018-19	38,348	1,778	40,126	78,510	10,368	88,878	116,858	12,146	129,004
2019-20	39,404	205	39,609	82,894	6,436	89,330	122,298	6,641	128,939
2020-21	35,326	302	35,628	70,969	3,327	74,296	106,295	3,629	109,924
2021-22	29,270	122	29,392	60,338	4,397	64,735	89,608	4,519	94,127
Grand Total	178,632	5,302	190,097	388,939	28,312	417,251	573,734	33,614	587,045
5 Year Change	-19.3%	-92.7%	-22.5%	-19.3%	-35.8%	-25.7%	-23.1%	-46.9%	-24.7%
5 Year Average	35,726	813	36,540	74,594	6,276	80,869	110,320	7,089	117,409

Source: CCCC MIS Referential Data Files

Between 2017-18 and 2021-22, districtwide course enrollments for credit courses declined 23.1% from 116,541 to 89,608, and course enrollments in non-credit courses increased by 46.9% from 8,510 to 4,519.

**Course Enrollment (Distance Education)**



Academic Year	Crafton Hills College			San Bernardino Valley College			SBCCD		
	Face to Face	Distance Education*	Total	Face to Face	Distance Education	Total	Face to Face	Distance Education	Total
2017-18	31,468	6,476	37,944	65,635	21,472	87,107	97,103	27,948	125,051
2018-19	31,463	8,663	40,126	66,279	22,599	88,878	97,742	31,262	129,004
2019-20	28,970	10,639	39,609	64,422	24,908	89,330	93,392	35,547	128,939
2020-21	14,311**	21,317**	35,628	2,452	71,844	74,296	16,763	93,161	109,924
2021-22	8,524	20,868	29,392	12,797	51,938	64,735	21,321	72,806	94,127
Grand Total	114,736	67,963	182,699	211,585	192,761	404,346	326,321	260,724	587,045
5 Year Change	-72.9%	222.2%	-22.5%	-80.5%	141.9%	-25.7%	-78.0%	+160.5%	-24.7%
5 Year Average	22,947	13,593	36,540	42,317	38,552	80,869	65,264	52,145	117,409

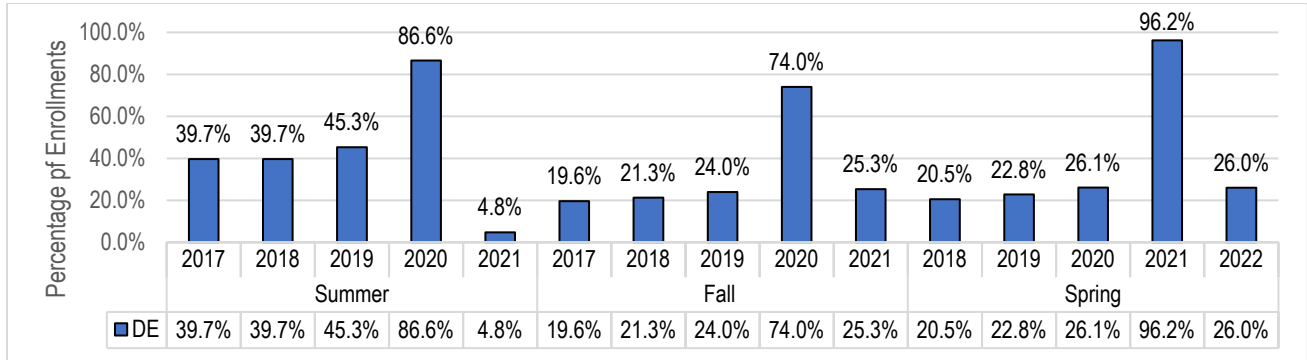
Source: CCCC MIS Referential Data Files

\*Note: Distance Education modalities at SBCCD include fully online, hybrid, and distance learning classroom courses.

Note that \*\* means that the 2020-21 Data was impacted by the Covid-19 Pandemic and the course’s instructional methods did not update from Face to Face to DE. As such, the accuracy of these numbers is not verifiable.

Between 2017-18 and 2021-22, the percentage of Distance Education course enrollments increased by 55.0% from 22.3% to 77.3%. Over this period, the enrollments for Distance Education courses increased by 160.5% from 27,948 to 72,806 with a five-year average enrollment of 52,145, and the enrollments for face-to-face courses declined by 78.0% from 97,103 to 21,321.

**Course Enrollment (Distance Education) By Terms: 2017-18 Through 2021-22**



	Crafton Hills College			San Bernardino Valley College			SBCCD		
	Face to Face	DE	Total	Face to Face	DE	Total	Face to Face	DE	Total
2017 Summer	2,467	1,450	3,917	6,421	4,399	10,820	8,888	5,849	14,737
2018 Summer	2,436	1,849	4,285	7,371	4,595	11,966	9,807	6,444	16,251
2019 Summer	2,164	2,214	4,378	6,724	5,144	11,868	8,888	7,358	16,246
2020 Summer	1,969*	2,688*	4,657	154	11,074	11,228	2,123	13,762	15,885
2021 Summer	3,455	178	3,633	9,426	467	9,893	12,881	645	13,526
Grand Total	12,491	8,379	20,870	30,096	25,679	55,775	42,587	34,058	76,645
5 Year Change	40.0%	-87.7%	-7.3%	46.8%	-89.4%	-8.6%	44.9%	-89.0%	-8.2%

	Crafton Hills College			San Bernardino Valley College			SBCCD		
	Face to Face	DE	Total	Face to Face	DE	Total	Face to Face	DE	Total
2017 Fall	15,864	2,294	18,158	29,181	8,663	37,844	45,045	10,957	56,002
2018 Fall	14,489	3,168	11,966	29,594	8,731	38,325	44,083	11,899	55,982
2019 Fall	14,672	4,204	18,876	30,787	10,176	40,963	45,459	14,380	59,839
2020 Fall	11,673*	4,803*	16,476	1,309	32,219	33,528	12,982	37,022	50,004
2021 Fall	8,818	4,864	13,682	23,297	6,025	29,322	32,115	10,889	43,004
Grand Total	65,516	19,333	79,158	114,168	65,814	179,982	179,684	85,147	264,831
5 Year Change	-44.4%	112.0%	-24.7%	-20.2%	-30.5%	-22.5%	-28.7%	-0.6%	-23.2%

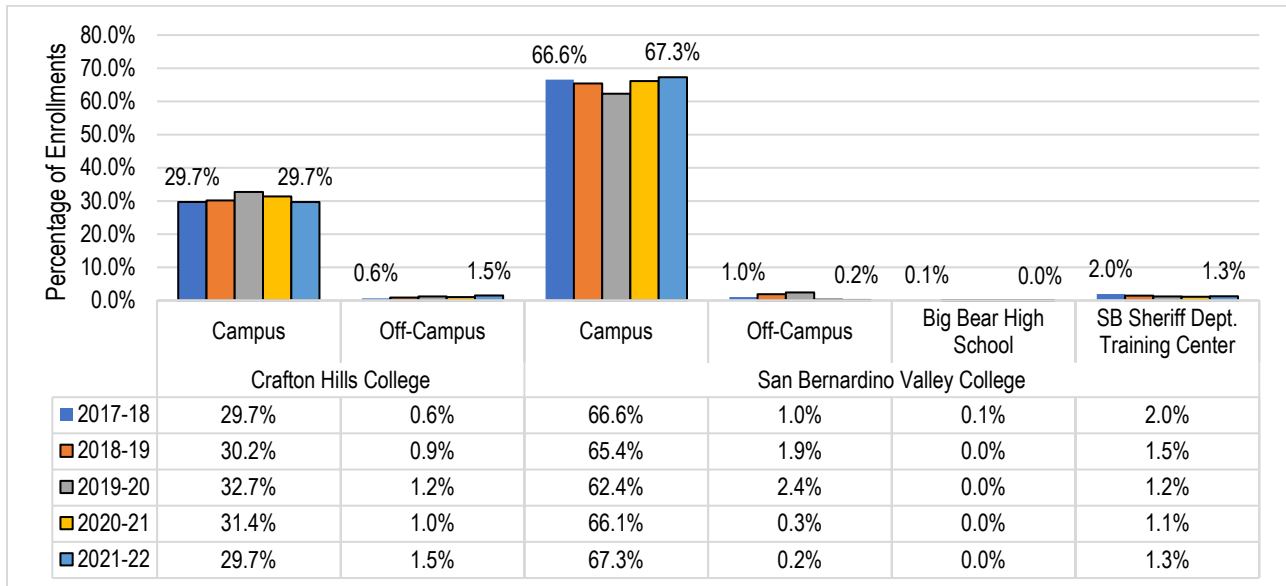
	Crafton Hills College			San Bernardino Valley College			SBCCD		
	Face to Face	DE	Total	Face to Face	DE	Total	Face to Face	DE	Total
2018 Spring	13,137	2,732	15,869	30,033	8,410	38,443	43,170	11,142	54,312
2019 Spring	14,538	3,646	18,184	29,314	9,273	4,285	43,852	12,919	56,771
2020 Spring	12,134	4,221	16,355	26,911	9,588	36,499	39,045	13,809	52,854
2021 Spring	669	13,826	14,495	989	28,551	29,540	1,658	42,377	44,035
2022 Spring	8,595	3482	12077	19215	6305	25520	27,810	9,787	37,597
Grand Total	49,073	27,907	76,980	106,462	62,127	134,287	155,535	90,034	245,569
5 Year Change	-34.6%	27.5%	-23.9%	-36.0%	-25.0%	-33.6%	-35.6%	-12.2%	-30.8%

Source: CCCC MIS Referential Data Files

Note that \* means that the 2020-21 Data was impacted by the Covid-19 Pandemic and the course's instructional methods did not update from Face to Face to DE. As such, the accuracy of these numbers is not verifiable.

Between 2017-18 and 2020-21, districtwide Summer course enrollments declined by 8.2%, Fall course enrollments declined by 23.2%, and Spring course enrollments declined by 30.8%. Over this period, the percentage of Distance Education course enrollments increased for Summer (39.7% in 2017-18 to 86.6% in 2021-22), for Fall (19.6% in 2017-18, 25.3% in 2021-22), and for Spring (20.5% in 2017-18, 26.0% in 2021-22).

**Course Enrollment By Location**

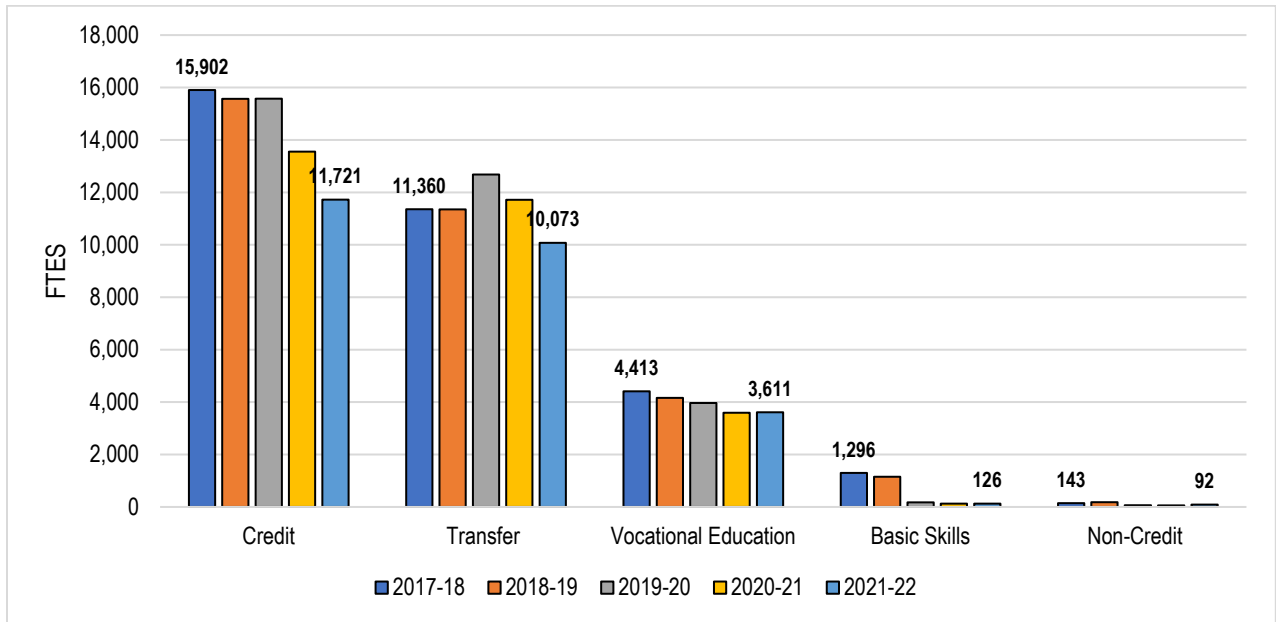


		2017-18	2018-19	2019-20	2020-21	2021-22	5 Year Change	5 Year Average
Crafton Hills College	Campus	37,143	38,948	38,161	34,499	27,961	-24.7%	35,342
	Off-Campus	801	1,178	1,448	1,129	1,431	+78.7%	1,197
San Bernardino Valley College	Campus	83,282	84,397	72,724	72,724	63,332	-24.0%	75,292
	Off-Campus	1,302	2,496	2,822	315	174	-86.6%	1,422
	Big Bear High School	82	54	53	53	8	-90.2%	50
	SB Sheriff Dept. Training Center	2,441	1,931	1,417	1,254	1,221	-50.0%	1,653
<b>Total</b>		<b>125,051</b>	<b>129,004</b>	<b>116,625</b>	<b>109,974</b>	<b>94,127</b>	<b>-24.7%</b>	<b>114,956</b>

Source: CCCC MIS Referential Data Files; SBCCD's Executive Information System

Between 2017-18 and 2021-22, course enrollment increases were observed at the CHC Off-Campus (+630, a 78.7% increase). A decrease in course enrollments was observed at SBVC Campus (-19,950, a 24.0% decline), CHC Campus (-9182, a 24.7% decline), SBVC Off-Campus (-1128, a 86.6% decline), SB Sheriff Dept. Training Center(-1220, a 50% decline), and Big Bear High School (-74, a 90.2% decline).

**Full-Time Equivalent Students (FTES): SBCCD**



FTES	2017-18	2018-19	2019-20	2020-21	2021-22	5 Year Change	5 Year Average
Credit FTES	15,902	15,570	15,574	13,556	11,721	-26.3%	14,465
Transfer	11,360	11,352	12,684	11,717	10,073	-11.3%	11,437
Vocational Education	4,413	4,160	3,964	3,595	3,611	-18.2%	3,949
Basic Skills	1,296	1,151	173	126	126	-90.3%	574
Non-Credit FTES	143	183	64	57	92	-35.7%	108
<b>Total FTES</b>	<b>16,045</b>	<b>15,753</b>	<b>15,638</b>	<b>13,614</b>	<b>11,814</b>	<b>-26.4%</b>	<b>14,573</b>

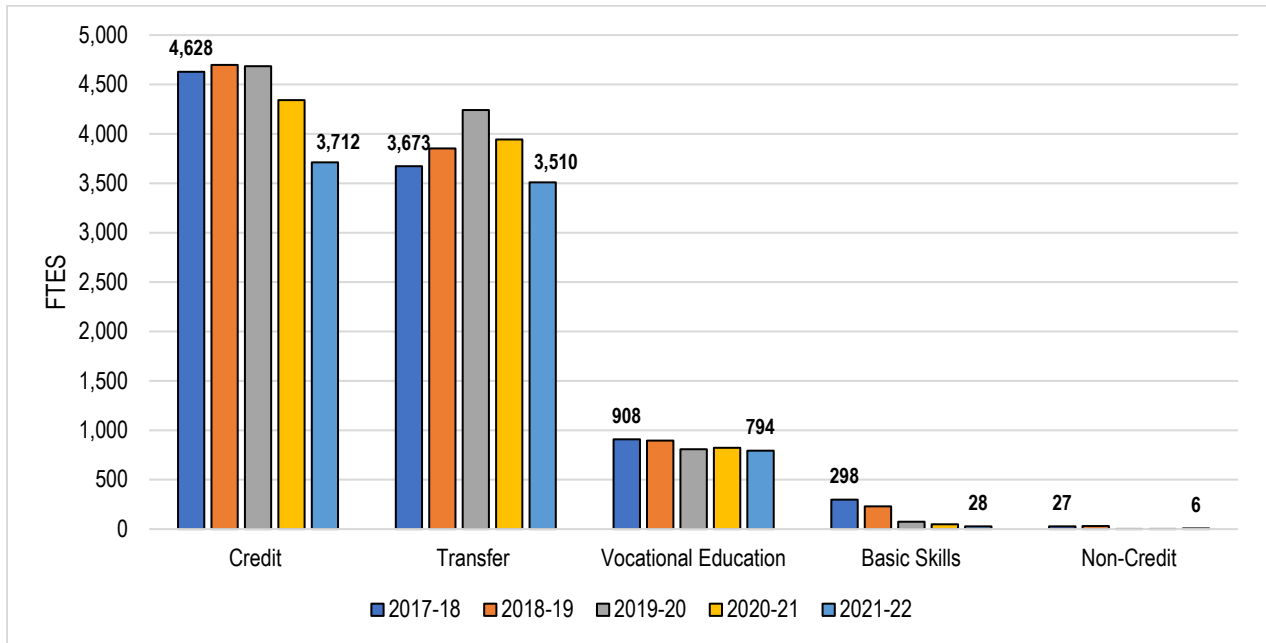
Source: CCCCO Data Mart at the following link: [https://datamart.cccco.edu/Students/FTES\\_Summary.aspx](https://datamart.cccco.edu/Students/FTES_Summary.aspx)

Note: The FTES value is calculated by summing the "Total Hours" (refer to SXD4 in CCCCO MIS Data Element Dictionary) in all the enrollment records reported to CCCCO MIS during the requested time period, then dividing by 525. If "Total Hours" cannot be derived because data is missing or set to "Unknown/Unreported", the enrollments are not included. All activity in classes eligible for state apportionment funding is included. This methodology is not same as the methodology used in calculating FTES for CCFS-320 report.

Between 2017-18 and 2021-22, the District Credit FTES declined by 26.3% from 15,902 to 11,721, the Transfer FTES declined by 11.3% from 11,360 to 10,073, and the Vocational FTES declined by 18.2% from 4,413 to 3,611, the Basic Skills FTES declined by 90.3% from 1,296 to 126, and the Non-Credit FTES declined by 35.7% from 143 to 92.



**Full-Time Equivalent Students (FTES): Crafton Hills College**



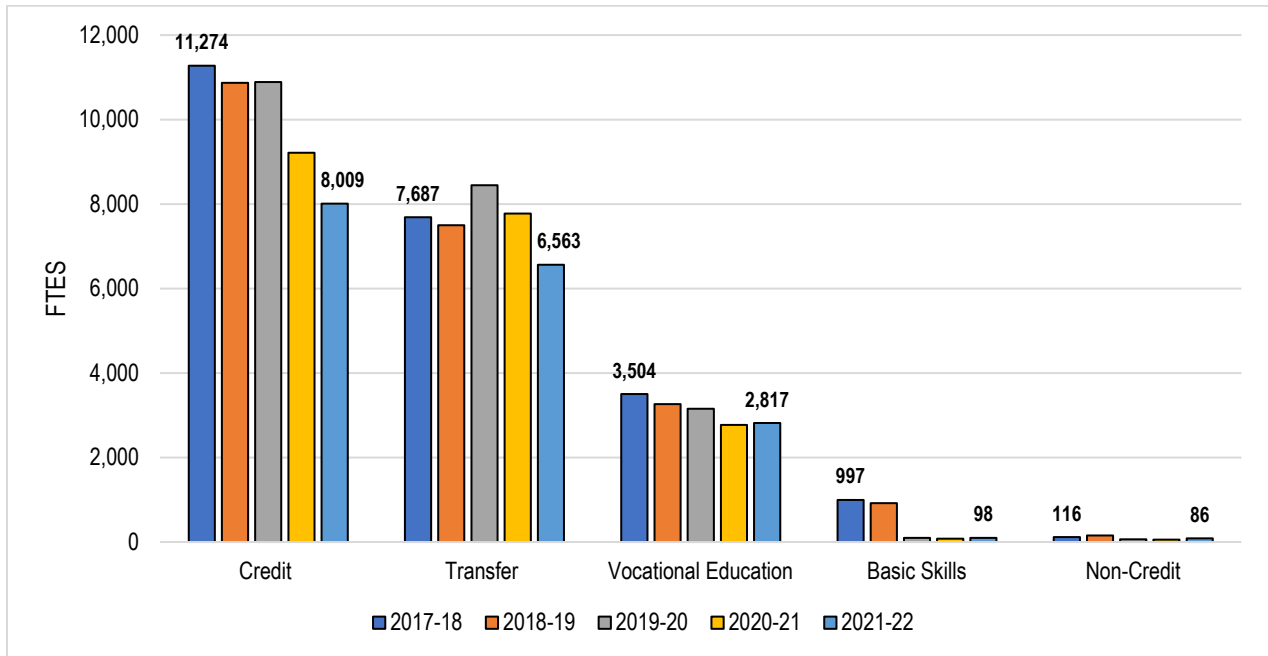
FTES	2017-18	2018-19	2019-20	2020-21	2021-22	5 Year Change	5 Year Average
Credit FTES	4,628	4,699	4,685	4,342	3,712	-19.8%	4,413
Transfer	3,673	3,853	4,241	3,943	3,510	-4.4%	3,844
Vocational Education	908	896	808	823	794	-12.6%	846
Basic Skills	298	230	74	48	28	-90.5%	136
Non-Credit FTES	27	30	1	2	6	-77.1%	13
<b>Total FTES</b>	<b>4,655</b>	<b>4,729</b>	<b>4,686</b>	<b>4,344</b>	<b>3,718</b>	<b>-20.1%</b>	<b>4,426</b>

Source: CCCCO Data Mart at the following link: [https://datamart.cccco.edu/Students/FTES\\_Summary.aspx](https://datamart.cccco.edu/Students/FTES_Summary.aspx)

Note: The FTES value is calculated by summing the "Total Hours" (refer to SXD4 in CCCCO MIS Data Element Dictionary) in all the enrollment records reported to CCCCO MIS during the requested time period, then dividing by 525. If "Total Hours" cannot be derived because data is missing or set to "Unknown/Unreported", the enrollments are not included. All activity in classes eligible for state apportionment funding is included. This methodology is not same as the methodology used in calculating FTES for CCFS-320 report.

Between 2017-18 and 2021-22, the Credit FTES generated by Crafton Hills College declined by 19.8% from 4,628 to 3,712, the Transfer FTES declined by 4.4% from 3,673 to 3,510, the Vocational Education FTES declined by 12.6% from 908 to 794, the Basic Skills FTES declined by 90.5% from 298 to 28, and the Non-Credit FTES declined by 77.1% from 27 to 6.

**Full-Time Equivalent Students (FTES): San Bernardino Valley College**



FTES	2017-18	2018-19	2019-20	2020-21	2021-22	5 Year Change	5 Year Average
Credit FTES	11,274	10,871	10,889	9,214	8,009	-29.0%	10,052
Transfer	7,687	7,499	8,444	7,774	6,563	-14.6%	7,593
Vocational Education	3,504	3,264	3,156	2,772	2,817	-19.6%	3,103
Basic Skills	997	920	99	78	98	-90.2%	439
Non-Credit FTES	116	153	63	56	86	-26.1%	95
<b>Total FTES</b>	<b>11,391</b>	<b>11,024</b>	<b>10,952</b>	<b>9,270</b>	<b>8,095</b>	<b>-28.9%</b>	<b>10,146</b>

Source: CCCCO Data Mart at the following link: [https://datamart.cccco.edu/Students/FTES\\_Summary.aspx](https://datamart.cccco.edu/Students/FTES_Summary.aspx)

Note: The FTES value is calculated by summing the "Total Hours" (refer to SXD4 in CCCCO MIS Data Element Dictionary) in all the enrollment records reported to CCCCO MIS during the requested time period, then dividing by 525. If "Total Hours" cannot be derived because data is missing or set to "Unknown/Unreported", the enrollments are not included. All activity in classes eligible for state apportionment funding is included. This methodology is not same as the methodology used in calculating FTES for CCFS-320 report.

Between 2017-18 and 2021-22, the Credit FTES generated by San Bernardino Valley College declined by 29.0% from 11,274 to 8,009, the Transfer FTES declined by 14.6% from 7,687 to 6,563, the Vocational Education FTES declined by 19.6% from 3,504 to 2,817, the Basic Skills FTES declined by 90.2% from 997 to 98, and the Non-Credit FTES declined 26.1% from 116 to 86.